

Professional refrigerant recovery, tools, and accessories for today's HVAC/R technician





Quick Finder Index

Recovery Machines	1 - 3
Refrigerant Scales	4
Refrigerant Leak Detectors	5
Combustible Gas Detectors	6
Ultrasonic Leak Detector	7
Digital Thermometer	7
Leak Detection	8
Thermometers	9
Gauges & Hoses	10 - 13
Valves & Fittings	14
Vacuum Pump Oil	15
Vacuum Pumps	16 - 17
Digital Vacuum Gauge	17
Tubing and Deburring Tools	18
Flaring tools & Fin Straightener	19
Mini-Split Installations / Service	20

As long as there's been air conditioning, there's been Robinair, the global leader of HVAC/R air conditioning (A/C) refrigerant recovery, recycling and recharge tools, equipment and accessories. Industrial and commercial contractors have turned to Robinair for A/C service products since 1956.

RG6

115V Portable Recovery Machine

wPerformance and Speed for Today's Busy Technicians

The RG6 is engineered to include what technicians need in a recovery machine – a rugged and tough machine with fast recovery rates. The RG6 is built for speed providing the best refrigerant recovery speeds in all conditions, including high temperatures. An oversized condenser keeps the machine cool in extreme environments. Lightweight and easy to carry, the RG6 can withstand the harsh conditions found in industrial and commercial refrigerant recovery.



RG6



Features

- › **Twin-Cylinder Design** – Provides best-in-class* recovery performance.
- › **Oil-less Compressor** – Capable of handling both liquid and vapor recovery.
- › **Oversized Condensers and Fan** – Larger condenser area and larger fan allow for maximum cooling and shorter cycle times.
- › **High Pressure Safety Shut-off Switch** – Automatically shuts off machine if pressure rises above 550 psi.
- › **Self-Purge Feature** – Eliminates potential for cross-contamination and saves time.
- › **Easy to Operate, Rugged Case** – Oversized pressure gauges, comfortable handle and simple controls.
- › **Handles Almost All Refrigerants** – Works with all common CFC, HFC, HCFC Refrigerants including R-410A.
- › **IEC connector and power cord.**



International Model

RG6-230 – 230V Pro Recovery Machine

Replacement Part

100343 – Filter Dryer

Accessories

SK-6002 – Filter / Drier Kit (includes filter / drier, 6 inch hose)

SK-5001 – 80% Tank Shut-off Kit



100343

RG6 Specifications	
Capabilities	Push-Pull, Liquid, Vapor
Compressor	3/4 hp, direct drive
Power	115 VAC 60Hz / 230 VAC 50/60Hz
Weight	27 lbs
Dimensions	17" L x 9" W x 12" H
Approvals	UL (ARI-740) / CE pending
Warranty	1 year -over the counter exchange

RG6 Recovery Rates per ARI -740-98*									
	Push Pull	Liquid	Vapor	High Temp Vapor (104°)	Push Pull	Liquid	Vapor	High Temp Vapor (104°)	
	lbs/min				kg/min				
R22	14.50	9.37	0.59	0.48	6.58	4.25	0.27	0.22	
R410A	15.47	7.51	0.37		7.02	3.41	0.17		
R134A	11.74	6.40	0.42		5.33	2.90	0.19		
R407C	14.49	7.14	0.53		6.57	3.24	0.24		

* UL and ARI tests are a level field comparison method. In other testing conditions, machines can exhibit much higher rates.

RG3

115V Portable Recovery Machine
Recovery Just Got Smaller

The RG3 sets the new standard in refrigerant recovery. All jobs are different. From a rooftop to a marine HVAC system, the RG3 is easy to use and ideal for any residential and appliance sized recovery job. Capable of recovering both liquid and vapor refrigerant, the RG3 is engineered to withstand the punishment of daily use even under extreme conditions.

Features

- **Compact and Lightweight** – 40% smaller footprint, easy to carry, weighing in at 18 lbs!
- **Oil-less Compressor** – Capable of recovering both liquid and vapor.
- **Handles Almost All Refrigerants** – Works with all common CFC, HFC, HCFC Refrigerants including R-410A.
- **High Efficiency Cross Flow Design** – Layout of fan and condenser is maximized for shorter cycle times.
- **High Pressure Safety Shut-off Switch** – Automatically shuts off machine if pressure rises above 550 psi.
- **Easy to Operate, Rugged Case** – Easy to read gauges, comfortable handle and simple 2 valve controls
- **IEC Connector** and power cord.



RG3

International Models

RG3-230 – 230V Portable Recovery Machine

Replacement Parts

100343 – Filter Dryer

Accessories

SK-6002 – Filter / Drier Kit (includes filter / drier, 6 inch hose)

SK-5001 – 80% Tank Shut-off Kit



100343

RG3 Specifications	
Capabilities	Push-Pull, Liquid, Vapor
Compressor	1/3 hp, single cylinder, oil-less
Power	115v 60Hz / 230v 50Hz
Weight	18 lbs.
Dimensions	12.5" L x 6.5" W x 9.5" H
Approvals	UL (ARI-740), CE
Warranty	1 year -over the counter exchange

RG3 Recovery Rates per ARI -740-98*								
	Push Pull	Liquid	Vapor	High Temp Vapor (104°)	Push Pull	Liquid	Vapor	High Temp Vapor (104°)
	lbs/min				kg/min			
R22	11.76	6.32	0.20	0.22	5.33	2.87	0.09	0.10
R410A	12.62	3.54	0.17		5.72	1.60	0.07	
R134A	8.84	5.43	0.18		4.01	2.46	0.08	
R407C	11.59	5.44	0.18		5.25	2.47	0.08	

* UL and ARI tests are a level field comparison method. In other testing conditions, machines can exhibit much higher rates.

25200B

Refrigerant Recovery Machine

- › Designed for the recovery medium and high-pressure refrigerants, including R-410A.
- › Automatically switches from liquid to vapor recovery.
- › Provides continuous recovery without the need to change the hose or flip a switch.
- › Automatic high pressure cut-out switch for safety.
- › Direct liquid recovery without damaging the compressor.
- › Oil-less compressor allows rapid transfer of large amounts of liquid.
- › Efficient fan and large condenser can handle high ambient temperatures.
- › Multi-refrigerant capable with Self-Clearing feature, which prevents cross-contamination.
- › Four 60" hoses, with ball-valves included
- › Optional Float Cable provides automatic shut off when tanks are 80% full.
- › 1/4" MFL fittings.
- › Power Source – 115V 60 Hz.
- › Weight: 32 lbs.
- › 20" H x 12.5" W x 10.5" D.



UL CERTIFIED To meet
EPA Regulations per
ARI 740 8EA7

International Models

25201B – 220V-240V 50/60 Hz, metric gauges, CE approved (power cord not included).

19498 – 220V Optional Float Cable Assembly.

Optional Accessories	Part No.
30Lb (14kg) Recovery Tank	17121
30Lb (14kg) Recovery Tank with 80% capacity sensor	17605
50Lb (23kg) Recovery Tank	17506
50Lb (23kg) Recovery Tank with 80% capacity sensor	17572
50Lb (23kg) High Pressure Recovery Tank with 80% capacity sensor (use with R-410A)	RGT50HP
100V Optional Float Cable Assembly	KT-5001
Filter-Drier, 1/4" MFL x 1/4" MFL	100343
Hose, Blue 4" Long	100345



17121



17605



17506



17572

30 lb. / 50 lb. Refrigerant Tanks

17121 – 30 lb. tank, 1/4" fittings (25150, 25175, 25200B, 34234, 34300-2K, 34800 series).

17605 – 30 lb. tank with float switch (17650A series).

17506 – 50 lb. tank, 1/4" fittings (17800A, 17800-2K, 17700A, 25150, 25175, 25200B series).

17572 – 50 lb. tank with float switch.

UL CERTIFIED To meet
EPA Regulations per
ARI 740

17800C

Multi-refrigerant recover, recycle, recharge machine

The 17800C recovers, recycles, evacuates and recharges, all in one fast and continuous operation through one hook-up. It's ideal for mass transit vehicles, buses, refrigerated trailers or containers and other applications that use refrigerants not typically found in mobile applications.

- › Automatically controls machine functions, leading the user through operations and also notifying when it's time to change the filter drier, and vacuum pump oil
- › Automatically adjusts from liquid to vapor for fast and efficient recovery.
- › Electronic scale makes it simple to recharge to factory specifications; also weighs recovered refrigerant and provides tank overflow protection.
- › 5 cfm vacuum pump is large enough to thoroughly evacuate almost any system; making it ready for recharging.
- › Manual air purge function to remove any non-condensable contaminants.
- › Vacuum leak test function allows user to monitor the system for vacuum decay to determine if a leak exists in the A/C system.
- › Automatic oil drain allows the user to see amount of oil removed from the system being serviced.
- › Heavy-duty filter can handle up to 300 lbs. of refrigerant, effectively removing moisture and acid from the refrigerant.
- › Easy to view 4.3" color graphical display.
- › Maintenance counters to monitor cumulative amounts of refrigerant recovered and charged, as well as other machine operation variables.
- › Optional printer can be added to expand capabilities and provide printed record of service performed.
- › Compatible with R12, R22, R134A, R401A, R401B, R402A, R402B, R404A, R407A, R407B, R407C, R410A, R500, R502, and R507 refrigerants.



International Models

17800C-230 – 230V Multi-refrigerant recover, recycle, recharge machine

Replacement Parts

19776 – Quick change filter

17572 – 50 lb. tank with float switch



19776

Specifications

Voltage	115VAC, 60Hz (17800C), 230VAC, 50Hz (17801C)
Operating Temp Range	50 to 105° F (11 to 41° C)
Recovery rate	Vapor, 0.5 lbs./min and Liquid 1 lbs./min
Vacuum Pump	5.0 cfm at 60 Hz
Hose length	18 ft. (5.5 m)
Recycling filter	300 lbs. refrigerant capacity
Dimensions	47" H x 26" W x 30" D
Certification	UL 1963, UL STANDARD FOR SAFETY REFRIGERANT RECOVERY/RECYCLING EQUIPMENT
Weight	230 lbs. 104 kg (without tank)

Slimline Refrigerant Scales

The TIF Slimline scales offered industry leading accuracy and performance with the choice of getting the familiar usability and quality in either a 120 pound/55 kg. or 200 pound/91 kg. capacity.

Features

- › Touch Key controls.
- › Three display modes – Lbs./oz.; Decimal Lbs., Kilograms.
- › Extremely Accurate.
- › Auto Zero.
- › Removable platform and control box with prop stand/hanging hook.
- › Compact design, completely portable.
- › Removable control box with prop stand/hanging hook.
- › CE approved.
- › Two year warranty.
- › Blow molded case.



Specifications	TIF9010A	TIF9020A
Range 15.8 oz., OR	0 lbs. 0.0 oz. to 120 lbs. 0.0 oz., 0.000 lbs. to 120.000 lbs., OR 0.000 kg to 55.000 kgs	0 lbs. 0.0 oz. to 199 lbs. 0.000 lbs. to 199.990 lbs., OR 0.000 kg to 100.000 kg
Resolution	0.1 oz./0.005 lbs./2 grams	0.2 oz./0.010 lbs./4 grams
Accuracy	± 0.5% of reading	± 0.5% of reading ± 1 digit
Operating Temp	32° to 120°F (0° to 49°C)	32° to 120°F (0° to 49°C)
Power Supply	9VDC	9VDC
Battery Life	30 hours	30 hours
Coil Cord Length	6 ft. (1.8m)	6 ft. (1.8m)



TIF9031



TIF9030

Economy Digital Refrigerant Scale

- › Easy to carry and store.
- › Capacity up to 220 lbs. (100 kg). Display shows lbs./oz. and kg.
- › High accuracy (±0.5 oz.) and resolution (0.1oz).
- › 9-volt battery power.
- › Platform to adapt to most existing tanks (9" x 9").
- › Three control keys: On/Off, automatic zeroing, and measurement units.
- › Charging and recovery capabilities
- › CE approved.
- › One-year warranty.



TIF9030 – Economy digital refrigerant scale.

TIF9031 – Economy digital refrigerant scale carrying case.

TIF9055 Certified Refrigerant Scale

- › 220 pound / 100 kg capacity.
- › Allows automatic charging or recovery operations.
- › Color-coded keypad controls.
- › Three display modes – lbs./oz.; decimal lbs.; kilograms.
- › Very high resolution – 0.2 oz./0.010 lbs./4 grams.
- › Can be used with all refrigerants.
- › Advanced charge and recovery modes – uses tare weight and maximum capacity of cylinder to calculate maximum charge/recovery available.
- › User programmable memory for up to 99 different stored values.
- › “Repeat” charge feature.
- › Removable platform and control box with prop stand/hanging hook.
- › Compact design – completely portable, battery powered.
- › Low battery indicators.
- › Five-year warranty.



Specifications	
Range	0 lbs. 0.0 oz. to 219.99 lbs. 0.0 oz., OR 0.000 lbs. to 219.990 lbs., OR 0.000 kg to 100.000 kg
Resolution	0.2 oz./0.010 lbs./4 grams
Accuracy	± 0.5% of reading
Power Supply	Four AA batteries & one 9V battery
Battery Life	30 hours
Max. Solenoid Operating Pressure	500 psi
Operating Temp.	32°F to 120°F (0°C to 49°C)
Inlet/Outlet Ports	1/4" MFL fittings with 1/2" ACME adapters
Weight	Approx. 7 lbs.



- › Loud audible alert
- › Automatic calibration

- › Color display with graphics and visual alerts
- › Bar graph mode helps locate leaks faster
- › Loud audible alert
- › LED inspection lights
- › Automatic and Manual calibration

- › Color display with graphics and visual alerts
- › Bar and Pinpoint graphing modes help locate leaks faster
- › Loud audible alert with mute option
- › UV and Clear LED inspection lights
- › Automatic and Manual calibration

Made in USA with globally sourced components



MEETS SAE J2913 AND SAE J2791 ASHRAE 173-2012, EN14624-2012 INDUSTRY STANDARDS

COMPATIBLE WITH MOST COMMON REFRIGERANTS INCLUDING R22 AND R-410A

LD3 Features

- Long life, stable sensor up to 10 years
- Automatic calibration and reset to ambient
- 3 adjustable sensitivity levels
- Low battery indicator
- True mechanical pump
- Uses 4 AA alkaline batteries included
- Comfortable Santoprene handle grip

LD5 Features

- Unique color graphic LCD display
- Long life, stable sensor up to 10 years
- Automatic calibration and reset to ambient
- User friendly message and error screens
- Hi intensity LED inspection light
- 3 adjustable sensitivity levels
- Low battery indicator
- True mechanical pump
- Audio mute function
- Uses 4 AA alkaline batteries included
- Comfortable Santoprene handle grip

LD7 Features

- Patented 3 LED UV lights with 395-415 nm; wavelength is optimum for A/C dye fluorescence
- Unique color graphic LCD display
- Long life, stable sensor up to 10 years
- Sweep mode function to pinpoint leak source
- Automatic calibration and reset to ambient
- User friendly message and error screens
- Hi intensity LED inspection light
- 3 adjustable sensitivity levels
- Low battery indicator
- True mechanical pump
- Audio mute function
- Uses 4 AA alkaline batteries included
- Comfortable Santoprene handle grip

Specifications	LD3	LD5	LD7
Sensitivity	.05 oz/yr R-134a, .0123 oz/yr R1234yf	.05 oz/yr R-134a, .0123 oz/yr R1234yf	.05 oz/yr R-134a, .0123 oz/yr R1234yf
UV Mode	–	–	3 UV LEDs
UV Wave-length	–	–	395-415 nanometers
Sensor Life	> 10 years	> 10 years	> 10 years
Response Time	Instantaneous	Instantaneous	Instantaneous
Power Supply	4 AA alkaline batteries included	4 AA alkaline batteries included	4 AA alkaline batteries included
Battery Life	4 hours continuous	4 hours continuous	4 hours continuous
Warm up time	< 20 seconds	< 20 seconds	< 20 seconds
Alarm Near Sensor	–	–	Visual probe LED
LCD Display	–	128 x 160 full color graphic display	128 x 160 full color graphic display
Probe length	17 inches	17 inches	17 inches
Weight, lbs	1.5 lbs	1.5 lbs	1.5 lbs
Warranty	2 years (includes sensor)	2 years (includes sensor)	2 years (includes sensor)

TIF8800X

Combustible Gas Detector

The TIF8800X is a low maintenance, battery operated, combustible gas detector that provides a ticking signal that increases in frequency as the source of combustible gas or vapor is located. The TIF8800X is small enough to be operated with just one hand, yet loaded with the kind of advanced features service professionals demand. This tool allows you to pinpoint combustible gas leaks as small as 1 ppm quickly, while checking a relatively large area in a short amount of time with absolutely no calibration required.

Applications

The TIF8800X may be used in almost any situation where a combustible gas, vapor, or residue needs to be found. An ideal instrument for pinpointing combustible gas leaks in commercial, residential, and industrial applications.

- › Audible “ticking” signal
- › Leak strength indicating LEDs
- › Adjustable sensitivity
- › Cordless operation
- › Fast warm-up
- › Battery status indicator
- › 15 inch flexible probe for hard-to-reach areas
- › One-year warranty

Kit includes: TIF8800X, battery, battery charger and soft case.

International models

TIF8800X-E – 220V

Replacement Parts

- TIF8801** – Sensor
- TIF8802** – A/C adapter
- TIF8802E** – A/C adapter 220V
- TIF8808** – Battery cover
- TIF8809** – Ni Mh battery pack
- TIF8818** – Rubber boot



TIF8900

Combustible Gas Detector

The TIF8900 is a super-sensitive, cordless, combustible gas detector that detects a broad range of natural gases including propane, methanol, butane, and gasoline.

- › Solid-state sensor technology, long life, and precision.
- › Adjustable sensitivity levels; as low as 5ppm.
- › Audible “Geiger counter” signal.
- › Rechargeable battery and charger included.

International models

TIF8900-E – 220V.

Replacement Parts

- TIF8801** – Sensing tip.
- TIF8803A** – 115V battery charger.
- TIF8805** – Cigarette lighter adapter.
- TIF8806A** – Rechargeable Ni-Cad batteries.
- TIF8806B** – 220V battery charger.



Specifications

Power Source	Two 2.4V Ni-Cad batteries (included)
Battery Life	Approx. 4 hours per charge
Dimensions	8-1/2" L x 2-1/2" W x 2" D (21.59 cm x 6.35 cm x 5.08 cm)
Operating Range	32° F to 105° F
Probe Length	16 inches, weights 12.3 oz.

Gas Manifold Pressure Test Kits

- › Use these handy kits to Measure Natural gas or LP gas pressure across appliance manifolds.
- › Test gas stoves, furnaces, dryers and other gas appliances.
- › Economical and accurate – easier to use than a manometer.
- › Diaphragm gauge is calibrated in inches of water column, also shows ounces per square inch.
- › Includes fitting for quick connection to the appliance manifold.
- › Packed in high impact plastic case for protection during transit and use.

42160 – Manifold Pressure Test Kit, Pressure measurements from 0–35" of water col.

42162 – Manifold Pressure Test Kit, Pressure measurements from 0–10" of water col.



Specifications

Power Source	4.8V NiMH rechargeable battery pack lifetime up to 500 charge cycles
Operation	Continuous
Time	Approximately 4 hours
Warm-up	30 seconds
Duty Cycle	Continuous; no limitation
Response Time	Instantaneous
Sensitivity	Variable; as low as 1 ppm (gasoline)
Operating Environment	32°F to 104°F (0°F to 40°C)
Weight	16 ounces (454 grams)
Dimensions	8 in. x 3 in. x 1.8 in. (20.3 x 7.6 x 4.6 cm)
Certifications	UL913 7th Edition (use in Class I, II, or III, Division 1 hazardous (classified) locations)

16455

TruTrack Ultrasonic Leak Detector

Use TruTrack to identify:

- › Refrigerant leaks
- › Pressurized gas leaks
- › Vacuum leaks
- › Dry nitrogen gas leaks
- › Steam leaks
- › Failing solenoids, valves, bearings

Easy to Use – Just put on the headset, adjust the sensitivity level, and place the sensor near the suspected problem area; you can use the sensor alone or with one of the probes.

Positive Identification – You hear the sound of the leak in the headset with no beeps or squeals; the sound is loudest when you are near the leak.

Accurate – Wind, stray gases, or other contaminants will not trigger a false alarm; the unit suppresses most background noises.

Dependable – There are no clogged tips to clean, or sensors to replace, for accurate readings.

Versatile – Ideal for a wide range of service and preventive maintenance applications. Taking regular readings of bearing or solenoid function, for instance, can show increased noise, which may be a sign the component is starting to fail.

16455 – Comes complete with padded carrying case, headset, solid contact probe, and flex tube.

Replacement Parts

16458 – Replacement headset.



16451

TruTrack Ultrasonic Sound Generator

An ideal accessory for Robinair's Model 16455 Ultrasonic Leak Detector, the sound generator detects seal failure in refrigerators, microwaves, vehicle passenger compartments, trunks, and any other location where there should be a good seal. Battery-operated unit emits special frequency from inside the test area; where the sound can be heard, a leak exists.



Specifications

Power Source	One 9V battery (included)
Dimensions	4-1/2" L x 3-3/8" W x 3/4" D (11.43 cm x 8.57 cm x 1.9 cm)
Weight	5 oz. (140 g)



43240

Digital Thermometer

- › Sampling time is just one second; HOLD button freezes display for accuracy.
- › Easy-to-read display can be read even in direct sunlight.
- › Durable case includes a cover to protect the probe.
- › Min/Max display for reading temperature ranges.

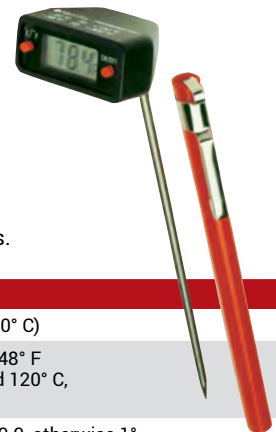
Specifications

Range	-40° to 390° F (-40° to 200° C)
Accuracy	± 2° F between -14° and 212° F ± 1° C between -10° and 100° C, Otherwise: ± 3° F (±1° C)
Display Resolution	0.1° F (0.1° C) throughout range
Battery	One 1.5V x 1, Size LR44 (battery included)

43230

Swivel Head Digital Thermometer

- › 180° swivel head makes display easier to read in tight places.
- › Reliable readings over the entire temperature range.
- › Sampling time is just one second.
- › Durable case includes a pocket clip.
- › For surface, liquid, and air temperatures.



Specifications

Range	-58° to 302° F (-50° to 150° C)
Accuracy	± 2° F between -4° and 248° F q± 1° C between -20° and 120° C, Otherwise: ± 4° F (±2° C)
Display Resolution	0.1° between -19.9 to 199.9, otherwise 1°
Battery	One 1.5V x 1, Size LR44 (battery included)
Automatic Power OFF	After 10 minutes if ON/OFF is not pressed.



Dial Thermometers

All pocket thermometers come with a pocket-clip carrying case for protection and easy access. Easy-to-read faces are available in a variety of sizes and ranges.

Part No.	Temperature	Size
10596	-40° to + 160°F	1" dial face
10597	0° to + 220°F	1" dial face
10945	0° to + 220°F	1-3/4" dial face
40859	-40° to + 70°C	1" dial face



16330

UV Leak Detection, HVAC/R Dye Kit

- › Complete HVAC/R Leak Detection Kit Includes:
- › Cordless UV light, Injector, 6 Dye Cartridges, Charger, UV Glasses, Connecting Hose (1/4" FFL), "Date Installed" Labels, Dye Cleaner, Protective Carrying Case.
- › Great for pinpointing those elusive "hard to find" leaks.
- › Super Bright 12 LED array - Cordless, Rechargeable UV Light.
- › Drop / Shock Proof Light – produces NO heat.
- › Universal HVAC/R Dye Cartridges – Compatible with ALL Lubricants & Refrigerants.
- › Compact Injector & Cartridge system – Pre-measured: No mess or waste.
- › One Year Warranty.

16332

UV Leak Detection, HVAC/R Dye Kit

- › HVAC/R Leak Detection Kit Includes:
- › Injector, 6 Dye Cartridges, Connecting Hose (1/4" FFL), "Date Installed" Labels, Dye Cleaner.
- › Great for pinpointing those elusive "hard to find" leaks.
- › Universal HVAC/R Dye Cartridges – Compatible with ALL Lubricants & Refrigerants.
- › Compact Injector & Cartridge system – Pre-measured: No mess or waste.
- › One Year Warranty.



Specifications	
Battery Type	Nickel Metal Hydride - Rechargeable
Battery Life/Charge	3 Hours of continuous use
UV LED working life	100,000 hours

International Versions	Model Number
European HVAC/R Master Kit w/ 220 Volt battery charger	16331
Battery Charger (replacement), 220V	16349

Replacement Parts (supplied with product)	Part No.
Injector Gun	16339
Hose, replacement	16340
Replacement Dye Cartridges, 1/4 oz. (6 ea.)	16336
Replacement Dye Cartridges, 1/2 oz. (6 ea.)	16337
Replacement Dye Cartridges, 3/4 oz. (6 ea.)	16338
Dye Cleaner, 32 oz. Bottle	16263
Glasses, UV	16211

Optional Accessories	Part No.
Dye Injector Kit - HVAC/R	16332
Tracker Ultra Leak DET LED light with UV glasses	16215

HVAC/R Dye Cartridge
A/C Dye Replacement Cartridges
Pinpoint leaks in A/C Systems



16336

- › 6 Cartridges (0.25 OZ./7.5 ml).
- › For Medium Systems: Residential systems up to 4.9 lbs. (2.2 kg) of refrigerant or up to 1.6 qt. (1.8 l) of oil.
- › For kits: No.16330, 16331, 16331 and 16332.



16337

- › 6 Cartridges (0.5 oz./15 ml).
- › For Medium-Large Systems: Light commercial and large residential systems 5 to 9.9 lbs. (2.3 to 4.5 kg) of refrigerant or 1.7 to 3.2 qt. (1.9 to 3.7 l) of oil.
- › For kits: No.16330, 16331, 16331 and 16332.



16338

- › 6 Cartridges (0.75 OZ./22.5 ml).
- › For Large Systems: Commercial & light industrial, including all split 10 to 25 lbs. (4.6 to 11.4 kg) of refrigerant or 3.3 qt. to 2 gal. (3.8 to 9.1 l) of oil.
- › For kits: No.16330, 16331 and 16332.



16215
Tracker Ultra Leak Detection LED Light

- › High Output UV LED
- › True UV higher wavelength light fluoresces dyes brighter than other lower wavelength "blue" LED UV lights.
- › Battery powered.
- › Compact Design - easy to use and move around in tight areas.
- › Durable aluminum package.

TIF7620, TIF7612, TIF7610 IR Thermometer PRO

- › Complete IR design is incorporated inside of a single chip, reducing space and creating a compact and light weight product.
- › Innovative optical lens – accurate measurements; wide temperature range.
- › Laser pointer – Easy to define the target area to be measured.
- › Extend temperature – TIF7612 and TIF7620 have a thermocouple interface that can extend the temperature up to 1999°F.
- › Simple and easy to operate – Simply point at desired target and press the trigger button for a temperature reading.
- › Set alarm temperatures (Low and High Temperatures) to receive alert information when the you are measured out of the range (TIF7612 and TIF7620 only).
- › (MAX), (MIN), Difference between MAX and MIN (DIF), and average (AVG) modes are available in TIF7612 and TIF7620.
- › Visual low battery indicator.



Specification	TIF7610	TIF7612	TIF7620
Measurement Range	-76 to +932°F (-60 to +500°C)	-76 to +932°F (-60 to +500°C)	-76 to +1400°F (-60 to +760°C)
Thermocouple Measurement Range	N/A	83.2 to +1999°F (-64 to +1400°C)	83.2 to +1999°F (-64 to +1400°C)
Accuracy: Tobj = 59°-95°F (15-35°C) Tamb=77°F (25°C)	±1.8°F (1.0°C)	±1.8°F (1.0°C)	±1.8°F (1.0°C)
Accuracy: Tobj = -27-932°F (-33-500°C) Tamb= 73°F ±5°F (23 ± 3°C)	±2% of reading or 4°F (2°C) whichever is greater	±2% of reading or 4°F (2°C) whichever is greater	±2% of reading or 4°F (2°C) whichever is greater
Thermocouple Accuracy	N/A	±1% of reading or 1.8°F (1°C) whichever is greater (Test under Tamb=73±11°F[23+6°C])	±1% of reading or 1.8°F (1°C) whichever is greater (Test under Tamb=73±11°F[23+6°C])
Emissivity	0.95 fixed	Adjustable	Adjustable
Resolution: 14.2° F~199.9° F (-9.9~199.9°C)	0.1°F/0.1°C (1° below 9.9 and above 199.9)	0.1°F/0.1°C (1° below 9.9 and above 199.9)	0.1°F/0.1°C (1° below 9.9 and above 199.9)
Spectral Response	5 ~ 14µm	8 ~ 14µm	8 ~ 14µm
Response Time (90%)	.5 sec	.5 sec	.5 sec
Distance: Spot	10:1	12:1	20:1
Battery Life	Up to 18 hours	Up to 18 hours	Up to 18 hours
Dimensions	175.2 x 39.0 x 71.9mm	175.2 x 39.0 x 71.9mm	175.2 x 39.0 x 71.9mm
Weight	179 grams including batteries (AAA*2pcs)	179 grams including batteries (AAA*2pcs)	179 grams including batteries (AAA*2pcs)

**TIF7201
Pocket IR Thermometer**

- › System-on-a-chip SoC technology: compact and lightweight
- › Backlit LCD display w/ dual readings
- › °C / °F Switch and MAX function
- › Auto power off after 15 sec.
- › Battery level indication
- › Distance to spot (D/S): 1:1

Applications:

- › Automotive
- › Electrical
- › General home use
- › HVAC/R
- › Batteries included



TIF7201

**TIF785
Photo Tachometer**

Capable of measuring and recording the rotational, linear and surface speeds. Non-contact function makes it easy to use in hard to reach or tight spaces. Easy to handle palm sized design makes it easy to maneuver when performing traditional contact measurement.

Features:

- › Both non-contact and contact modes
- › Operates at a distance of up to 40 in (100 cm)
- › Laser sighting
- › Auto ranging/fix decimal
- › Ability to capture and store readings
- › Low battery indicator

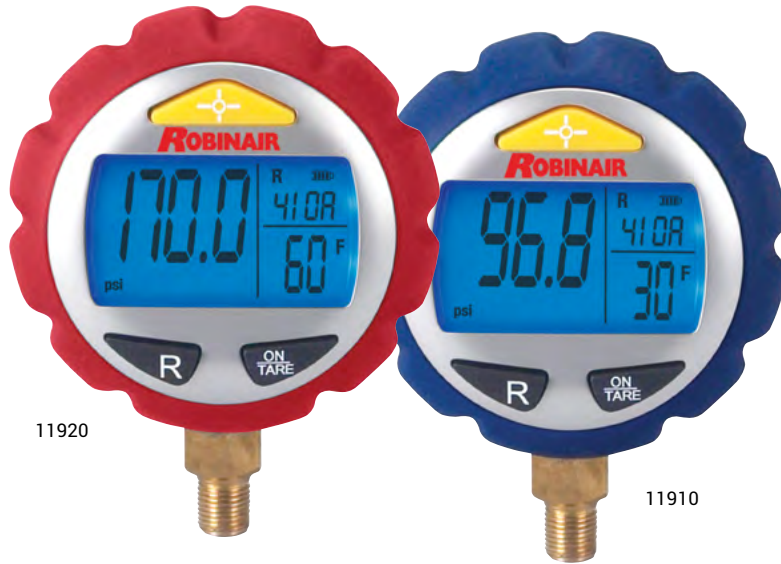
TIF785 Photo Tachometer includes: Photo Tachometer, Contact adapter, Wheel adapter, Cone adapter, Funnel adapter, 21" reflective tape, and Protective carry case.



Digital Manifold Gauges

The low side gauge has a pressure scale of 30 inHg VAC to 250 psig and the high side gauge has a pressure scale of 0 to 800 psig. Gauges come with a backlight to enhance the view and make the gauges easy to see in low light conditions.

- › Includes profiles for 17 common refrigerants.
- › Detects vacuums in "Hg.
- › Selectable temperature and pressure units of measure.
- › Easy-to-read LCD screen with large digits.
- › Automatic shutdown after 15 minutes of inactivity.
- › Low battery indicator.



11920

11910



43160



43180

Part No.	Description
11910	Low side digital gauge
11920	High side digital gauge
43160	4-Way Manifold w/ Digital Gauges - No hoses
43166	4-Way Manifold w/ Digital Gauges - 60" Enviro-Guard Hoses w/ Quickseal fittings
43180	2-Way Manifold w/ Digital Gauges - No hoses
43186	2-Way Manifold w/ Digital Gauges - 60" Enviro-Guard Hoses w/ Quickseal fittings

Specifications

Operating Temperature 0°C – 50°C;
32°F – 122°F

Storage Temperature -20°C – 70°C;
-4°F – 158°F

Measurement Units psi; BAR; kPa; kg/cm2
°C (Celsius); °F (Fahrenheit)

Operating Range

Low Pressure Gauge 30~0inHg, 0~250 psi, -1~17.5 BAR, -100~1750 kPa, -1~17.5 kg/cm2

High Pressure Gauge 0~800 psi, -1~55.15 BAR, -100~5515 kPa, -1~56.25 kg/cm2

Accuracy

Low Pressure Gauge ± 1% FSO ± 1 LSD

High Pressure Gauge ± 1% FSO ± 1 LSD for 0~500 psi range
± 5% FSO ± 1 LSD for 500~080 psi range

Resolution

Low Pressure Gauge 0.2 psi; 0.05 BAR; 1 kPa; 0.05 kg/cm2

High Pressure Gauge 0.5 psi; 0.05 BAR; 5 kPa; 0.05 kg/cm2

Temperature 1°C / 1°F

Display Positive LCD 50 mm x 30 mm w/ blue backlight
(backlight has 30-second auto-shutoff)

Power Requirement Three 1.5V AAA alkaline batteries

Battery Life 140 hours

ESD Contact at ± 4 kV; air discharge at ± 8 kV

FSO = Full Scale Output
LSD = Least Significant Digit



42260



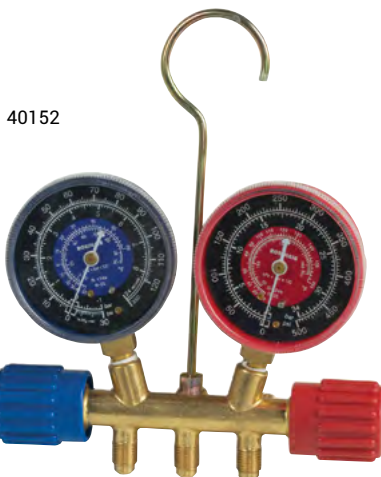
42266

4-Way Aluminum Gauges

Constructed from solid aluminum for added durability needed for repeated, tough daily use. Contoured easy to grip hand wheels are color coded for quick and easy identification. Full 3/8" bores through the body aids in getting the job done quickly and efficiently.

- › Large, easy to read 3-1/8" (80mm) gauges protected by Lexan lenses.
- › 3/8" vacuum port for use with larger hose to cut evacuation time.
- › Improved face seal valves. Better design provides a tighter seal, less wear and improved flow.
- › Proven, double O-ring piston design for extra reliability and longer life.
- › Available with various length hoses or as manifold only.

Refrigerant	Part No.	Hoses
R410A	42248	3 – 60" 1/4" Enviro-Guard hoses (RYB), 45° in-line compact ball valves, 1 – 60" 3/8" black evac hose, 45°
R22/404A/410A	42278	3 – 60" 1/4" Enviro-Guard hoses (RYB), 45° in-line compact ball valves, 1 – 60" 3/8" black evac hose, 45°
R12/22/502	42266	3 – 60" 1/4" Enviro-Guard hoses (RYB), 45°, 1 – 60" 3/8" black evac hose, 45°
R134a/404A/407C	42216	3 – 60" 1/4" Enviro-Guard hoses (RYB), 45°, 1 – 60" 3/8" black evac hose, 45°
R22/134a/404A	42296	3 – 60" 1/4" Enviro-Guard hoses (RYB), 45°, 1 – 60" 3/8" black evac hose, 45°



40152

	Part No.	Gauge	RYB Hose
R22/134a	40152	2 1/2" Red/Blue	Manifold only
	40153	2 1/2" Red/Blue	36" Standard hoses with standard fittings
	40169	2 1/2" Red/Blue	60" Standard hoses with standard fittings
R22/404A/410A	40170	2 1/2" Red/Blue	Manifold only
	40174	2 1/2" Red/Blue	60" Enviroguard hoses with Quickseal fittings
R410	41671	2 1/2" Red/Blue	Manifold only
	41670	2 1/2" Red/Blue	60" Enviroguard hoses with in-line ball valve fittings

Two Way Brass Manifolds

- › Our popular Side Wheel Manifold is durable and easy to use.
- › Forged brass for long life; durable handwheels, color-coded Lexan®.
- › Universal Gauges – Clearly marked so they're easy to read and protected with Lexan® lenses.
- › Works with all refrigerants.
- › Field Proven Face Seal Valves – Tight seal, less wear and improved flow.
- › Gauge combinations that measure up to three different refrigerants with one manifold.
- › Improved Face Seal Valves – Provide a tighter seal, less wear and improved flow.



13149



41676



11795



11794

Replacement Gauges

General usage gauges for multiple applications where pressure or vacuum readings are required. Dampening helps reduce excessive needle fluttering making the gauge much easier to read. Internal components are compatible with many industry applications. The ability to recalibrate the gauge is a standard feature on all gauges. Temperature scale reads in °F and pressure is displayed in either PSI or BAR.

Metric gauges with a temperature scale that reads in °C and pressure is displayed in either PSI or BAR.

Part No.	Description	Size	Press Scale	Refrigerants
11724	Compound Gauge - Blue	2-1/2"	30"- 0 - 250 PSI	R22/404A/410A
11725	Pressure Gauge - Red	2-1/2"	0 - 800 PSI	R22/404A/410A
11734	Compound Gauge - Blue	2-1/2"	30"- 0 - 120 PSI	R12/22/502
11735	Pressure Gauge - Red	2-1/2"	0 - 500 PSI	R12/22/502
11744	Compound Gauge - Blue	2-1/2"	30"- 0 - 120 PSI	R134a/404A/507
11745	Pressure Gauge - Red	2-1/2"	0 - 500 PSI	R134a/404A/507
11754	Compound Gauge - Blue	2-1/2"	30"- 0 - 120 PSI	R22/134a/404A
11755	Pressure Gauge - Red	2-1/2"	0 - 500 PSI	R22/134a/404A
11794	Compound Gauge - Blue	2 1/2"	30"- 0 - 120 PSI	R22/134a
11795	Pressure Gauge - Red	2-1/2"	0 - 500 PSI	R22/134a
13149	Compound Gauge - Blue	2 1/2"	30"- 0 - 250 PSI	R410A
41676	Pressure Gauge - Red	2-1/2"	0 - 800 PSI	R410A
11797	Compound Gauge - Blue - °C	2-1/2"	-1 - 0 - 24 BAR	R22/134a
11798	Pressure Gauge - Red - °C	2-1/2"	0 - 34 BAR	R22/134a
11804	Compound Gauge - Blue	3-1/8"	30"- 0 - 250 PSI	R410A
11805	Pressure Gauge - Red	3-1/8"	0 - 800 PSI	R410A
11824	Compound Gauge - Blue	3-1/8"	30"- 0 - 120 PSI	R22/404A/410A
11825	Pressure Gauge - Red	3-1/8"	0 - 500 PSI	R22/404A/410A
11835	Pressure Gauge - Red	3-1/8"	0 - 500 PSI	R12/22/502
11854	Compound Gauge - Blue	3-1/8"	30"- 0 - 120 PSI	R22/134a/404A
11855	Pressure Gauge - Red	3-1/8"	0 - 500 PSI	R22/134a/404A
11874	Compound Gauge - Blue	3-1/8"	30"- 0 - 120 PSI	R22/404A/407C
11875	Pressure Gauge - Red	3-1/8"	0 - 500 PSI	R22/404A/407C

Charging Hoses

Robinair premium refrigerant charging hoses are built for long life and dependability. A strong, six-sided crimp provides a reliable connection between the hose and barb, even at maximum pressure. The coupler nuts are deeply knurled for quick finger-tightening. Enviro-Guard™ hoses are ideal for high pressure applications, including R-410a systems.



Hose Selection Charts

1/4" Standard Hoses with Standard Fittings

Neoprene-coated for flexibility and wear resistance, with a valve core depressor and a 45° bend on one end for convenient access to the system.

500 psi working pressure; 2500 psi burst pressure.

Length (inches)	Yellow	Blue	Red	Pkg. Set (Blue, Red, Yellow)
36	31036	32036	33036	30036
60	31060	32060	33060	30060
72	31078	32072	31079	30072
96	31096	32096	33096	N/A

1/4" Standard Hoses with Quick Seal™ Fittings

500 psi working pressure; 2500 psi burst pressure.

Length (inches)	Yellow	Blue	Red	Pkg. Set (Blue, Red, Yellow)
72	38172A	38272A	38372A	39072A

1/4" Enviro-Guard™ Hoses with Quick Seal™ Fittings

Special barrier material prevents virtually any permeation of refrigerant, yet remains flexible. With 45° Quick Seal™ fittings.

740 psi working pressure; 3700 psi burst pressure.

Length (inches)	Yellow	Blue	Red	Pkg. Set (Blue, Red, Yellow)
36	68136A	68236A	68336A	69036A
60	68160A	68260A	68360A	69060A
72	68172A	68272A	68372A	69072A
96	68196A	68296A	68396A	69096A



68020

20' Charging Hoses

68020
Set of 20' Enviro-Guard™ red and blue, 1/4" fittings.

68420
Set of 20' Enviro-Guard™ red and blue, Quick Seal™ fittings.



65060

Special Hoses for Special Jobs Enviro-Guard™ Hoses with Ball Valves

In-line ball valves control refrigerant flow, open and close in a quarter turn.

- 65060**
Set of three 60" hoses with ball valves.
- 65160**
60" Enviro-Guard™ hose with ball valve, yellow.
- 65260**
60" Enviro-Guard™ hose with ball valve, blue.
- 65360**
60" Enviro-Guard™ hose with ball valve, red.

Stem Replacement Assembly Kit

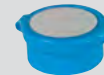
Kits include all necessary parts to service one manifold valve. To replace stems on both valves, order two kits.



40232
Stem assembly kit for manifolds with conical seal design.



13148
Face seal kit for side-wheel manifolds, includes stem with o-rings, spring, and screw. Will not fit sight glass manifold.



13067
High vacuum grease.

Replacement Handwheels



40449
Set of one red and one blue with 1/4" drive.



41698
Set of one red and one blue with 1/4" drive (barrel style).

Replacement Parts for Hoses & Adapters

Help's you keep your charging hoses and adapters in top working condition.



18180
O-rings for Quick Seal™ 1/4" fittings and adapters, pkg/6.



40082
1/4" valve core depressors, pkg/6.



40083
1/4" gaskets, pkg/6.



40084
3/8" gaskets, pkg/6.



40677
3/16" gaskets, pkg/6.



40653B
3/16" valve core depressors, pkg/6.



40352
Replacement valve cores, pkg/6.

Access Adapters 90° Style Adapters

Solid brass fitting is ideal for tight spots or locations where making connections is difficult.

10469A – 1/4" MFL x 3/16" FFL.

40563A – 1/4" MFL x 1/4" FFL.



40563A

Straight Style Adapters

Straight adapter is versatile and easy to use. Made of solid brass.

10468A – 1/4" MFL x 3/16" FFL.

40560A – 1/4" MFL x 1/4" FFL.



10468A

Flexible Adapters

Flexible adapters feature brass fittings and a durable neoprene-coated hose, 6" long.



10470A – 1/4" MFL x 3/16" FFL, red.

10778 – 1/4" MFL x 1/4" FFL, yellow.

Hose Adapters

These six inch adapters connect to any 1/4" FFL charging hose for convenient in-line control of refrigerant flow.

18501 – 1/4" MFL x 1/4" FFL, Blue.

18512 – 1/4" MFL x 1/4" FFL, Red.

18513 – 1/4" MFL x 1/4" FFL, Yellow.

18514 – 1/4" MFL x 1/4" FFL, Blue, Red and Yellow (set of 3).

18511 – 1/4" MFL x 3/16" FFL, Red.

Quick Seal™ Adapters

Quick Seal fittings automatically shut off the charging hose when you disconnect it from the system, so any refrigerant left in the hose is not released. Made of solid brass.

10292 – 1/4" MFL to 1/4" FFL.

10250 – 1/4" MFL to 1/4" FFL, 90°.



10292

Quick Seal Repair Kits

18451 – 45° 1/4" Quick Seal™ kit.

40302 – 1/2" Acme Quick Seal™ kit.

18180 – 1/4" Quick Seal™ o-rings.



18451

Brass Caps

40572 – 1/4" solid brass Quick Seal™ caps have knurled ridges for easy gripping. pkg/6.



40572

Refrigerant Side Can Tap

10102 – Hinged design means no inserts to lose. R-12 and R-134a port fittings with Shrader valves.



FFL Coupling

40410 – 1/4 MFL with core x 1/4 FFL with copper gasket, pkg/6.

Quick Couplers with Depressors

40553 – 1/8 FPT x 1/4 FFL, ea.

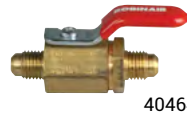


General Purpose Valves

Straight Type

40464 – Straight Type 1/4 MFL x 1/4 MFL.

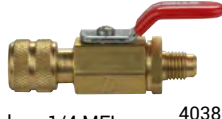
13144 – Straight Type 1/4 MFL x 1/4 FPT.



40464

Quick Coupler Style Valve

40380 – Quick Coupler Style Valve 1/4 FFL Coupler x 1/4 MFL.



40380

Tube Piercing Valves

Piercing Valves with Flow Control and 1/4 S.A.E. Connector Size.

40288 – Fits 3/16, 1/4, 5/16, 3/8 OD.

40291 – Gaskets for 40288/40330, pkg/3.



40288

Piercing Valves with Valve Cores

40330 – Fits 3/16, 1/4, 5/6, 3/8 OD.

40336 – Fits 1/2, 5/8 OD.



40330

40472

Straight Line Top Valves Fits 1/4, 5/16, 3/8 OD.



1/4" Valve Core Remover/Installer

13145 – Valve core remover/installer with 6 valve cores.



Valve Core Remover/Installer

18560 – Remove and install valve cores from a 1/4" male flare access fitting without the loss of refrigerant. Durable, solid brass tool has a ball valve that can be opened or closed in just a quarter-turn. Stainless steel ball and brazed side fitting for durability and long life.



Valve Core Remover/Installer

18561 – Replace leaking valve cores quickly and easily, or remove the valve core and hold it out of place for evacuation or charging. The 18561 features a solid brass body with convenient handle that opens and closes in a quarter-turn to speed service.



General Purpose Fittings Tees/Fittings

40384 – 1/4 MFL Branch with core x 3/8 OD tube or 1/2 OD solder, pkg/3. Comes with 40535 Valve Core Remover.

40386 – 1/4 MFL run x 1/4 FFL run with depressor x 1/4 MFL Branch with core, pkg/3.

40396 – 1/4 MFL Branch with core 1/4 MFL run x 1/4 FFL swivel run, pkg/3.

40398 – 1/4 FFL Swivel Branch with depressor x 1/4 MFL run with core x 1/4 MFL run, pkg/3.



40386



40396



40398



40421

40427

40422



40417

Access Fittings Solder Union Type

40416 – 1/4 MFL x 1/8 OD Copper Tube Ext., pkg/6.

40417 – 1/4 MFL x 3/16 OD Copper Tube Ext., pkg/6.

13142 – 1/4 MFL x 1/4 OD Copper Tube Ext., pkg/6.

40419 – 1/4 MFL x 5/16 OD Copper Tube Ext., pkg/3*.

40420 – 1/4 MFL x 3/8 OD Copper Tube Ext., pkg/3*.

13143 – 1/4 MFL x 1/4 OD or 3/8 ID Solder with cap and chain*.

40427 – 1/4 MFL x 1/4 OD or 3/8 ID Solder, pkg/6*.

* Comes with 40535 Valve Core Remover.

Elbow Access Fitting

40422 – 1/4 MFL with core x 1/8 MPT Elbow, pkg/6.

Pump Intake Fittings

R-12/R-134a Dual Inlet Fittings Convert your pump to R-12 and R-134a. Solid brass tees replace inlet fittings on pump; includes a branch with a 1/4" MFL fitting for R-12 (and other refrigerants).



13110



13066



15555



15195



15495

Pump Intake Fitting Adapters:

13110 – Adapter, 3/8" FFL to 1/4" MFL.

15555 – Screw-on inlet adapter converts any pump, 1/4" FFL coupler x 1/4" MFL x 1/2" Acme.

15195 – 1/4" MFL/1/2" Acme combination inlet fitting for 15200 series vacuum pumps.

15495 – 1/4" MFL/1/2" Acme combination inlet fitting for 15400/15600 series vacuum pump.



14774

14773

Pick Extractor and Thread Chaser

14774 – For use with No. 18560 or 18561, valve core remover/ installer, lets you remove damaged cores in the service line while the system is fully charged. No release of refrigerant into the atmosphere.

14773 – For use with No. 18560 or 18561, valve core remover/ installer. This item actually repairs damaged threads on valve cores in the service line, without releasing refrigerant into the atmosphere.



13119

13203

13204

Premium High Vacuum Pump Oil

The performance of your pump depends largely on the quality and purity of the vacuum pump oil. Robinair's oil is engineered to maintain maximum viscosity at high running temperatures and to improve cold weather starts.

To keep the pump operating at peak efficiency, change the oil frequently. Moisture and other contaminants can quickly deteriorate the purity of the oil, thinning the oil, and reducing the pump's ability to reach deep vacuum conditions.

Thermally Stable

Laboratory tests prove that Robinair oil is more thermally stable in comparison to other leading brands, which means it resists breaking down due to heat for a longer period of time.

Lower Moisture Content

Robinair oil has a lower moisture content than other oils, thanks to our special packaging and handling procedures. Moisture degrades the oil's purity, thinning it, and reducing the pump's ability to reach a deep vacuum.

13119 – Pint bottle, 12 per case.

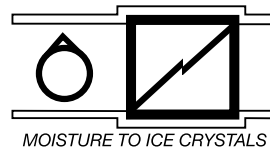
13203 – Quart bottle, 12 per case.

13204 – Gallon bottle, 4 per case.

Change Your Vacuum Pump Oil Frequently

Clean oil is important for peak vacuum pump performance. When the oil is contaminated, it reduces your pump's ability to remove moisture from a system. You should change the pump oil frequently, and especially in the following situations:

- › You have just evacuated a system that you suspect was overly moisture-laden.
- › You have just evacuated a system with a compressor burnout.
- › The pump oil looks cloudy or milky.
- › The pump will not pull to factory specifications when blanked off to an electronic thermistor vacuum gauge.
- › Every 10 hours of operation.



The Importance of Deep Vacuum

The purpose of a vacuum pump is to remove moisture and air from an A/C-R system. Modern systems are built tighter and charges are more critical. That means these systems have a greater sensitivity to moisture and other contaminants, making thorough evacuation more important than ever before.

Moisture in a refrigeration system, directly or indirectly, is the cause of most problems and complaints. First, moisture can cause freeze-up in a system. Moisture is picked up by the refrigerant and transported through the refrigerant line in a fine mist, with ice crystals forming at the point of expansion.

"Freeze-up" is not the only problem caused by moisture.

It can also result in corrosion, the effects of which are not apparent until the real damage has occurred. Moisture alone is bad enough, but combined with refrigerants containing chlorine, hydrochloric acids can form. These greatly increase the corrosion of metals.

Also, refrigerant oil rapidly absorbs moisture. Water-formed acids combine with the refrigerant, forming a closely bonded mixture of fine globules. The effect is called sludging and it greatly reduces the lubricating ability of the oil.

A vacuum pump removes troublesome moisture by lowering the pressure within the system and vaporizing (or boiling off) the moisture, then exhausting it along with air.

CoolTech™ – The Inside Story

A vacuum pump that's fast and thorough saves you not only time, but also the expense of callbacks and dissatisfied customers. Robinair pumps perform better than other pumps in the industry, ensuring you complete dehydration before recharging.

Robinair pumps are engineered specifically to meet the needs of the kind of A/C work you're doing today, and to give you trouble-free operation. We've put our years of experience and know-how into developing pumps that help you do the job faster and better.

All Robinair pumps are backed by our exclusive "No Hassle" over-the-counter replacement warranty. You can return a pump to your Robinair distributor for an immediate exchange – with no hassle! (In U.S. and Canada only; in other locations, see your Robinair distributor.)

Robinair CoolTech vacuum pumps are designed for use on A/C-R systems using CFCs, HCFCs, and HFCs in conjunction with mineral oil, ester oil, alkylbenzene oil, and PAG oil as lubricants. Do not use them with ammonia or lithium bromide systems; not for use with flammable refrigerants.

U.S. Patent Numbers: 4,523,897; 4,631,006; 5,209,653.

› Oil Fill Port

Makes adding oil simple since the port is accessible from the front or either side. The sight glass on the front of the pump shows you when enough oil has been added.

› Heavy Duty Motor

High torque design for easy startup and efficient operation.

› Molded Base

Durable polycarbonate base improves pump balance and minimizes vibration during operation.

› Iso-Valve™

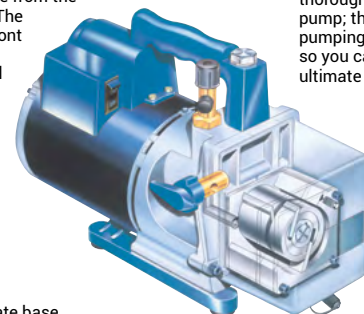
Isolates the pump from the system with just a quarter-turn.

› Two-stage Design

Cleans the system more thoroughly than a single-stage pump; the second stage starts pumping at a lower pressure so you can pull a deeper ultimate vacuum.

› Die-Cast Aluminum Housing

Cast aluminum housings make the pumps lightweight but durable.



› Oil Drain Valve

Positioned at the bottom of the oil reservoir and angled for faster, more complete draining.

› Offset Rotary Vanes

Our proven design builds a powerful compression within the pumping chamber to reduce system pressure and vaporize moisture, so it can be exhausted along with air.

Selecting the right size pump

The more air a pump moves, the faster it can reach an acceptable vacuum. A smaller pump takes more time to evacuate a system than one that's the correct size for the job.



Use this Chart as a Guide to Selecting the Right Size Pump.

System	Recommended Pump Size	
	Robinair® Pump	VacuMaster™ Pump
Up to 10 tons (35kW); Domestic Refrigeration, Passenger Cars	–	1.5 CFM (35 l/m)
Up to 30 tons (105kW); Residential A/C, Panel Trucks & RVs	4 CFM (93 l/m)	3 CFM (71 l/m)
Up to 50 tons (176kW); Rooftop A/C systems, Tractor/Trailers, Buses	6 CFM (142 l/m)	5 CFM (118 l/m)
Up to 70 tons (246kW)	10 CFM (236 l/m)	8 CFM

	Oil Fill Port	Heavy Duty Motor	Two-Stage Design	Molded Base	Die-Cast	Oil Drain Valve	Offset Rotary Vanes	Iso-Valve	Gas Ballast
Robinair® Pumps	•	•	•	•	•	•	•	•	•
VacuMaster® Pumps	•	•	•		•	•			

All Robinair pumps are backed by our exclusive “No Hassle” over-the-counter replacement warranty. You can return a pump to your Robinair distributor for an immediate exchange – with no hassle. (In U.S. and Canada only; in other locations, see your Robinair distributor.)

Robinair Vacuum Pumps

- › Power and capacity for a wide range of service applications.
- › High CFM rating for fast, thorough evacuation.
- › Two-stage rotary vane design.

Iso-Valve™ – Isolates the pump from the system with just a quarter-turn.

Gas Ballast – Moisture laden air passing through the pump mixes with relatively dry air so compression does not cause condensation.

Two-stage Design – Cleans the system more thoroughly than a single-stage pump; the second stage starts pumping at a lower pressure so you can pull a deeper, ultimate vacuum.

Oil Drain Valve – Positioned at the bottom of the oil reservoir and angled for faster, more complete draining.

Oil Fill Port – Makes adding oil simple since the port is accessible from the front or either side. The sight glass on the front of the pump shows you when enough oil has been added.

Heavy-Duty Motor – High torque design for easy startup and efficient operation.

Offset Rotary Vanes – Proven design builds a powerful compression within the pumping chamber to reduce system pressure and vaporize moisture so it can be exhausted along with air.

Molded Base – Durable polycarbonate base improves pump balance and minimizes vibration during operation.

Die-Cast Aluminum Housing – Cast aluminum housings make the pumps lightweight and durable.



15120A – 10 CFM



15600 – 6 CFM,
15400 – 4 CFM, 15434 – 4 CFM

Model	Free Air Displacement	Factory Micron Rating	No. of Stages	Intake Fitting	Oil Capacity	Motor Size	Voltage	Approvals	Weight	Dimensions
Domestic Models										
15400	4 CFM	15 microns	2	1/4" MFL & 1/2" MFL	15 oz. (445 ml)	1/2 hp	115V 60 Hz	UL	27 lbs. (12.2 kg)	9.75" H x 5.625" W x 15.5" L 247 mm x 143 mm x 394 mm
15434	4 CFM	15 microns	2	1/4" MFL & 1/2" Acme	13 oz. (384 ml)	1/3 hp	115V 60 Hz	UL	29 lbs. (13 kg)	9.75" H x 5.625" W x 15" L 247 mm x 143 mm x 381 mm
15600	6 CFM	15 microns	2	1/4" MFL, 3/8" MFL, & 1/2" MFL	15 oz. (445 ml)	1/2 hp	115V 60 Hz	UL	27 lbs. (12.2 kg)	9.75" H x 5.625" W x 15.5" L 247 mm x 143 mm x 394 mm
15120A	10 CFM	15 microns	2	1/4" MFL, 3/8" MFL, & 1/2" MFL	16.5 oz. (488 ml)	1/2 hp	115V 60 Hz	UL	38 lbs. (17.24 kg)	10.75" H x 5.625" W x 16.5" L 273 mm x 143 mm x 419 mm
International Models										
15401	94 liters/minute	15 microns	2	1/4" MFL & 1/2" MFL	13.5 oz. (400 ml)	1/3 hp	115V/220-250V 50/60 Hz	CE	29 lbs. (13 kg)	9.688" H x 5.625" W x 15.75" L 246 mm x 143 mm x 400 mm
15601	142 liters/minute	15 microns	2	1/4" MFL, 3/8" MFL, & 1/2" MFL	13.5 oz. (400 ml)	1/3 hp	115V/220-250V 50/60 Hz	CE	29 lbs. (13 kg)	9.688" H x 5.625" W x 16.5" L 246 mm x 143 mm x 419 mm
15121A	283 liters/minute	15 microns	2	1/4" MFL, 3/8" MFL, & 1/2" MFL	16.5 oz. (488 ml)	1/2 hp	115V/220V 50/60 Hz	CE	41 lbs. (18.60 kg)	10.75" H x 5.625" W x 17.5" L 273 mm x 143 mm x 445 mm

**VacuMaster™
Economy Vacuum Pumps**

- › Performance tested to meet Robinair’s high standards
- › Power and capacity for a wide range of service applications.
- › High CFM rating for fast, thorough evacuation.
- › Two-stage rotary vane design.

Features:

Two-stage Design – Cleans the system more thoroughly than a single-stage pump; the second stage starts pumping at a lower pressure so you can pull a deeper, ultimate vacuum.

Oil Drain Valve – Positioned at the bottom of the oil reservoir and angled for faster, more complete draining.

Oil Fill Port – Makes adding oil simple since the port is accessible from the front or either side. The sight glass on the front of the pump shows you when enough oil has been added.

Heavy-Duty Motor – High torque design for easy startup and efficient operation.

Die-Cast Aluminum Housing – Cast aluminum housings make the pumps lightweight and durable.



15150 – 1.5 CFM
15300 – 3 CFM
15500 – 5 CFM



15800 – 8 CFM

Model	Free Air Displacement	Factory Micron Rating	No. of Stages	Intake Fitting	Oil Capacity	Motor Size	Voltage	Weight	Dimensions
Domestic Models									
15150	1.5 CFM	50 microns	2	1/4" MFL and 3/8" Acme 3/8" FFL x 1/2" Acme adapter	7.4 oz. (219 ml)	1/4 hp	115V 60Hz	22 lbs. (10 kg)	9.5" H x 4.75" W x 12.5" L 240 mm x 120 mm x 315 mm
15300	3 CFM	35 microns	2	1/4" MFL and 3/8" MFL 3/8" FFL x 1/2" Acme adapter	7.5 oz. (220 ml)	1/3 hp	115V 60Hz	28 lbs. (12.5 kg)	10" H x 5" W x 13" L 255 mm x 123 mm x 336 mm
15500	5 CFM	35 microns	2	1/4" MFL and 3/8" Acme 3/8" FFL x 1/2" Acme adapter	7.5 oz. (220 ml)	1/3 hp	115V 60Hz	28 lbs. (12.2 kg)	10" H x 5" W x 13" L 255 mm x 123 mm x 336 mm
15800	8 CFM	35 microns	2	1/4" MFL and 3/8" MFL	18.6 oz. (550 ml)	1 hp	115V 60Hz	37 lbs. (16.8 kg)	16" H x 6" W x 10" L 406" mm x 152mm x 254mm
International Models									
15301 3 CFM	71 liters/ minute	35 microns	2	1/4" MFL and 1/2" MFL 3/8" FFL x 1/2" Acme adapter	7.5 oz. (220 ml)	1/3 hp	220V 50Hz	28 lbs. (12.5 kg)	10" H x 5" W x 13" L 255 mm x 123 mm x 336 mm
15501 5 CFM	118 liters/ minute	35 microns	2	1/4" MFL and 1/2" Acme 3/8" FFL x 1/2" Acme adapter	7.5 oz. (220 ml)	1/3 hp	220V 50Hz	28 lbs. (12.5 kg)	10" H x 5" W x 13" L 255 mm x 123 mm x 336 mm

RAVG-1

**Digital Vacuum Gauge
Easy as 1 - 2 - 3**

Connect, Measure, Test

The RAVG-1 employs a sophisticated MEMS Pirani type sensor that directly measures flow. Unlike all other field service gauges on the market, the RAVG-1 is NOT affected by temperature.

The RAVG-1 measures vacuum from Atmosphere to 10 microns in 6 different scales, and can withstand overpressure beyond 30 bar. The unit employs an industry first multi-color backlight that functions as an instant go/no go indicator of acceptable vacuum or leakage.



Features

- › High Resolution and unique backlight indicator make precision readings easy
- › Patent Pending design, employs a sophisticated MEMS Pirani sensor
- › Range from Atmosphere down to 10 microns
- › Measure vacuum in Microns, mmHg, inHg, mBar, Pascals or Torr
- › Extremely accurate at low micron levels
- › Impact and water resistant case with protective Rubber boot
- › Rapid response to changes in vacuum
- › Large easy to read 5 digit display
- › Auto shut off feature prolongs battery life
- › Battery powered
- › Integrated "magnetic" hook
- › Includes carrying case and tee adapters or in-line connections (1/4" MFL x 1/4" MFL and 1/4" FFL x 1/4" MFL versions)

Specifications

Operating Range	Atmosphere to 10 Microns
Resolution	As low as 5 Microns/ 0.005mmHg/0.002inHg/0.00 7mBar/0.66Pa/0.005Torr
Accuracy	As low as +/- 5 % of RDG
Over pressure	~ 31 Bar/450 psi
Measuring Units	Microns/mmHg/inHg/ mBar/Pa/Torr
Display	5 digit STN LCD, 50 x 30 mm with tricolor LED backlight
Power Supply	3 x size "AAA" 1.5 V batteries included
Input Connection	1/8"-27 NPT Male



Highlight: Integrated "Magnetic Hook" or connect to a manifold.



First time introduction: 3 color backlight display offers at one glance the vacuum process status

10994

Heater Blanket

Robinair's heater blanket speeds charging by maintaining a constant temperature, thus creating a positive pressure between the refrigerant tank and the A/C system.

- › Fits 30 and 50 pound refrigerant tanks.
- › Thermostat is set at 125°F (55°C).
- › 300 watts, 2.6 amps.
- › Thermal cut-off switch protects against overheating.



International Models

13184 – Heater blanket, 220V–240V 50 Hz, with internal IEC receptacle.



6512

Heavy-Duty Tubing Cutter

- › Works on tubing sizes 1/8" to 1-1/8" O.D. (3 mm to 29 mm).
- › Easily cuts copper, brass, aluminum, and steel brake lines.
- › Ream folds onto cutter body for storage.
- › Extra cutting wheel stored under ream.



42080, 42090

42071

Ratcheting Tubing Cutters

- Designed for confined spaces.
- Unique ratcheting action operates like a socket ratchet, but cuts copper, aluminum, stainless steel, and PVC.
- Spring-loaded adjusting screw applies continuous pressure while cutting.

42071 – Ratcheting tubing cutter for 1/8" to 1/2" tubing.

42080 – Ratcheting tubing cutter for 1/4" to 7/8" tubing.

42090 – Ratcheting tubing cutter for 1/4" to 1-1/8" tubing.



42022

Mini Tubing Cutter

With a short swing radius, this cutter makes quick work of cutting tubing in tight spots. The 42022 is especially versatile with its larger range: 1/8" to 1-1/8" O.D. tubing capacity.



42028

Tubing Cutter

Our roller-type cutter makes clean cuts in copper, aluminum, steel, and stainless steel tubing. Features easy action, wide capacity range, and a pencil reamer. For 1/4" to 1-1/2" O.D. tubing



Replacement Cutter Wheels

These top quality replacement cutter wheels are thinner for cleaner cuts with less effort. Made of high quality, shock-resistant, tool steel, the cutters are also heat treated to resist breakage and last longer. Cutter wheels are available to fit Robinair cutters, and can be used as replacements in nearly all other brands.



42024

Mini Tubing Cutter

With the smallest cutting radius in the industry, the 42024 is ideal for extremely tight places. A finer thread screw provides easier tightening. For 1/8" to 5/8" O.D. tubing.



42035

Slip-Adjust Tubing Cutter

- › All metal construction.
- › Spring-loaded cutting tool for faster cutting.
- › Two locations for spare cutting wheels (1 included).
- › For 1/4" to 2" tubing.
- › Includes attached reaming tool.

Replacement Wheel Chart

Model No.	Fits Cutter No.
42062	42028
42073	42071
42083	42080, 42090



6514

Mini Tubing Cutter

- › Works on tubing sizes 1/8" to 5/8" O.D. (3 mm to 16 mm).
- › Easily cuts copper, brass, aluminum, and steel brake lines in hard-to-reach places.
- › Ream folds onto cutter body for storage.
- › Extra cutting wheel stored under ream.



12479

Six-in-One Swaging Tool

- › One convenient tool, forms solder cups on six (6) different sizes of-tubing.
- › Made of fatigue proof steel.
- › Works on 3/16", 1/4", 5/16", 3/8", 1/2" and 5/8" tubing.



42040

Single Blade Deburring Tool

This handy tool removes internal burrs in copper tubing. It features a high-speed steel, blade, aluminum handle, and pocket clip. Tubing size is unlimited.



4503
Double Flaring Tool Kit

- › Designed for double or single flare in copper, aluminum, soft steel brake line, and brass tubing (to 45 degrees).
- › Includes five adapters 3/16" through 1/2" (4.8 mm through 12.7 mm).
- › Chrome swivel, made of alloy steel, reduces friction. Forged yoke made of heat-treated steel. Housed in a blow-molded storage case.



4504
Bubble (I.S.O.) Flaring Tool Kit

- › Designed for crack-free bubble flares on soft steel tubing used in automotive brake systems.
- › Includes four dies: 4.75, 6, 8, and 10 mm adapters.
- › Forged steel yoke, flaring bar, and all the adapters needed for ISO bubble flaring.
- › The most economical "Bubble" flare tool to date. Housed in a blow-molded storage case.



6502
Master Flaring Tool Kit

- Covers Single, Double, and Bubble type flares:
- › Single Flare Standard Lines 3/16" – 1/2".
 - › Single Flare Metric Lines 4mm – 14mm.
 - › Double Flare Standard Lines 3/16" – 1/2".
 - › Double Flare Metric Lines 4mm – 10mm.
 - › Bubble Flare Standard Lines 3/16" – 1/2".
 - › Bubble Flare Metric Lines 4.75mm – 10mm.
 - › Kit contains flaring bar, arbor press, adapters, tube cutter, deburring tool, all in a hard case.



6515
3-in-1 180° Tubing Bender

- › Capable of making 180° bends in copper, brass, aluminum, and steel tubing.
- › Just one tool works on three sizes of tubing: 1/4", 5/16" and 3/8".



14258
Process Tube Adapter Kit

- › Kit provides the quickest and easiest means of connecting charging lines to process tubes for evacuating and recharging a system.
- › Assures an absolute seal between tubing and the charging hose.
- › Eliminates the need for flaring and the possibility of metal chips getting into the system.
- › Includes Carrying Case with individual compartments.
- › Adapts 3/16", 1/4", 5/16" and 3/8" copper tubing to charging hose.



14450
Heat Gun

- A lightweight source of directed heat offering 500°F and 750°F settings, and also has a "cold" setting. This handy heat gun is ideal for many applications, including:
- › Fast heating/drying of materials.
 - › Quick curing/drying of epoxies.
 - › Applying shrink tubing.
 - › Softening tubing for bending.
 - › Speed-drying of touch-up paint to eliminate "haze"
 - › Drying out condensation in motors, clutches, controls, etc. Shock-proof and cool-running with a tough Lexan® housing, the unit weighs just 2-1/2 lbs.
 - › 115V 50/60 Hz.

Replacement parts
44997 – Switch assembly.



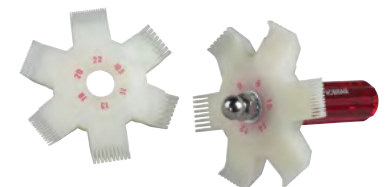
12294
Pinch-Off Tool

- › Patented clamping mechanism quickly and securely pinches off tubing and cloth-reinforced hose.
- › Comfortable cushion grip.
- › Ideal for closing off compressor process tubes.
- › For 3/16", 1/4", 5/16" and 3/8" tubing.



14998
Refrigerant Access Tool

- › Provides fast and easy access to refrigeration lines not equipped with access fittings.
- › Supplies instant pierce and seal for fast refrigeration evacuation.
- › Clamping mechanism automatically locks on tubing.



18403
Fin Straightener

- › Clean and straighten condenser and evaporator coils.
- › Compact design for confined spaces: the straightener head is 3-1/8" in diameter; the handle is 3-1/2" long.
- › Includes 12 clearly marked combs
- Wheel 1: 8, 9, 10, 12, 14, & 15 fins per inch
- Wheel 2: 10.5, 11, 13, 18, 20, & 22 fins per inch

Mini-Split Service Kit



42170

Every Tool you need for Mini-Split Installations / Service

- › Single valve manifold gauge, dedicated specifically for Mini-Split installation and service applications.
- › Custom length high pressure hoses, eliminates up to 20% of unnecessary charge volume compared to longer length hoses.
- › Protective blow molded case, gives a visual inventory of each tool – no more leaving tools behind at the job site.
- › Eccentric cone flaring tool produces a rolling action for uniform flare walls, which are ideal for mini-split R410A flares.

Kit Includes:

- 1/4" quick seal x 1/4" FFL standard 18" blue hose
- 1/4" quick seal x 1/4" FFL standard 36" yellow hose
- Metric torque wrench set
17mm, 22mm, 24mm, 26mm, 27mm, 29mm and wrench
- Metric ball hex "L" keys
1.5mm to 10mm
- Tubing reamer
- Tubing cutter 1/8" to 1-1/8" O.D. tubing capacity.
- Eccentric flaring tool
- R410A single port manifold
- Valve core removal tool
- 5/16" FFL x 1/4" MFL adapter
- 6 in 1 – Screwdriver



42170 Replacement Parts



68118

1/4" quick seal x 1/4" FFL standard 18" blue hose



68136A

1/4" quick seal x 1/4" FFL standard 36" yellow hose



14322

Metric torque wrench set 17mm, 22mm, 24mm, 26mm, 27mm, 29mm & wrench



14322-1

7mm individual wrench head



14322-2

22mm individual wrench head



14322-3

24mm individual wrench head



14322-4

26mm individual wrench head



14322-5

27mm individual wrench head



14322-6

29mm individual wrench head



14322-7

Wrench handle



12540

Tubing reamer



18706

Eccentric flaring tool



40120-R410A

R410A single port manifold



42022

Tubing cutter 1/8" to 1-1/8" O.D. tubing capacity



40156

5/16" FFL x 1/4" MFL adppter



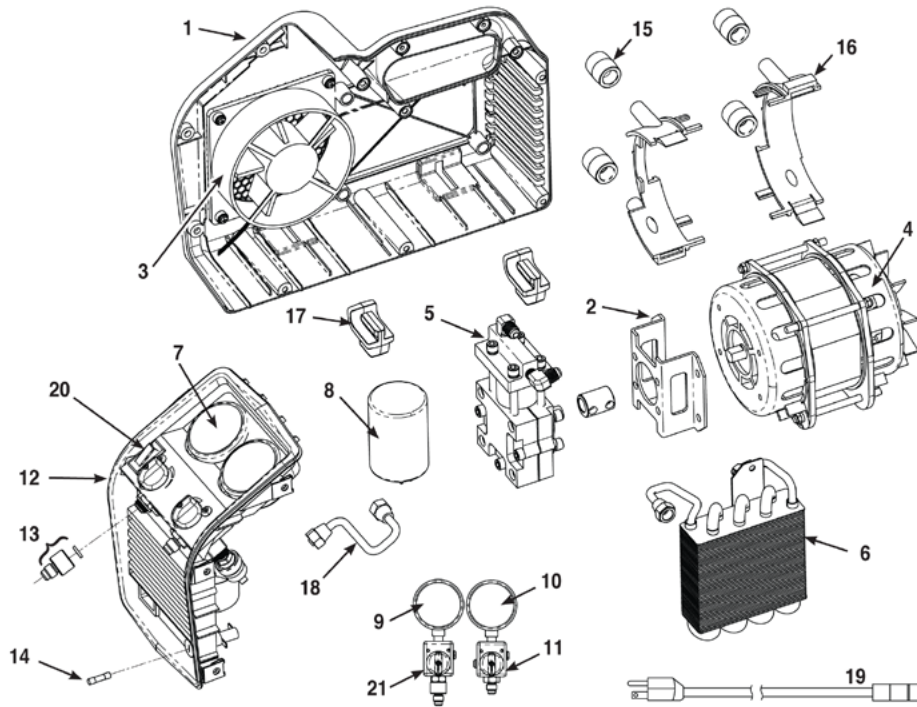
18562

Valve core removal tool



RG3

Portable Recovery Machine



RG3 Part List

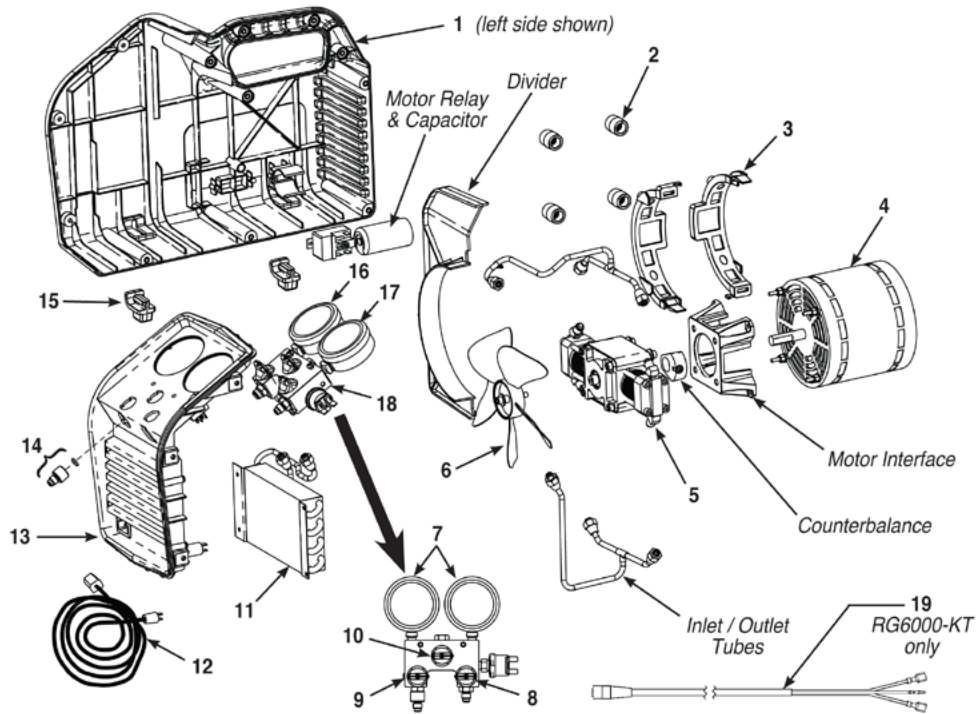
Item No.	Part No.	Description
1	570895	Case Kit (both halves)
2	SK-3001	Interface Kit (motor-compressor interface, coupler, hardware)
3	SK-3003	Fan
4	SK-3004	Motor Kit (motor, capacitor, hardware)
5	565504	Compressor
6	SK-3006	Condenser
7	565502	Gauge Lens (1 ea.)
8	565617	Motor Start Capacitor
9	SK-3007	Low-side Gauge Kit (low-side gauge, lens)
10	SK-3008	High-side Gauge Kit (high-side gauge, lens)
11	SK-3005	High-side Manifold Kit
12	565501	Front Bezel

Item No.	Part No.	Description
13	SK-6001	Inlet Fitting / Filter Screen Kit (inlet fitting, filter screen, o-ring)
14	565500	Fuse
15	550503	Grommet (1 ea.)
16	SK-3009	Motor Clamp Kit (4 pieces)
17	550502	Foot (1 ea.)
18	565616	Inlet Tube
19	551628	Power Cord
20	EL1310	Power Switch
21	SK-3010	Low-side Manifold Kit
(not shown)	100343	Filter / Drier
(not shown)	100345	6 in. Blue Hose
Rebuild Kit	SK-3011	Compressor Rebuild Kit (piston seals, valves, springs, o-rings)
Rebuild Kit	SK-6007	Valve Rebuild / Replacement Kit (inlet / outlet valves, springs, o-rings)



RG6

Portable Recovery Machine



RG6 Part List

Item No.	Part No.	Description
1	567913	Case Half (left)
	567915	Case Half (right)
2	550503	Grommet (1 ea.)
3	SK-6013	Motor Clamp Kit (4 pieces)
4	SK-6005	Motor Kit (includes motor, relay,
5	SK-6023	Compressor Kit (includes compressor, hardware)
6	SK-6008	Fan Kit (includes fan, spacer mounting hardware)
7	GA1000	Gauge Lens (1 ea.)
8	100124	Manifold Knob (red)
9	100123	Manifold Knob (blue)
10	100122	Manifold Knob (black)

Item No.	Part No.	Description
11	SK-6014	Condenser Kit (includes condenser assembly, hardware)
12	551628	Power Cord
13	SK-6012	Bezel Kit (includes bezel, power switch, circuit breaker, power entry module, hardware)
14	SK-6001	Inlet Fitting / Filter Screen Kit (includes inlet fitting, filter screen, o-ring)
15	550502	Foot (1 ea.)
16	SK-6003	Low-side Gauge Kit (includes low-side gauge, lens)
17	SK-6022	High-side Gauge Kit (includes high-side gauge, lens)
18	SK-6016	Manifold Kit (includes manifold assembly, hardware)

Vacuum Pumps



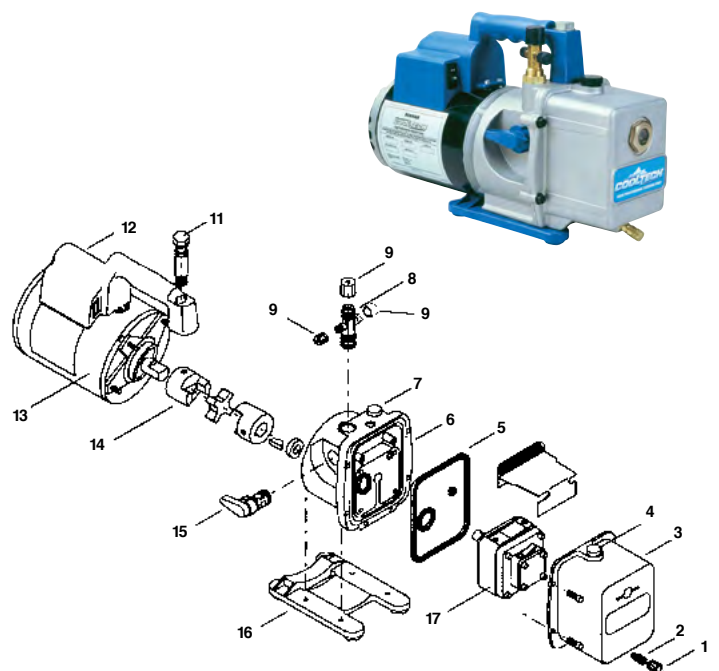
15150, 15151, 15155, 15203, 15300, 15301 15355, 15500, 15501, 15505 and 15800 Parts List

Part No.	Description
556672	Handle and Switch Assembly (Models 15300 & 15500)
556673	Handle and Switch Assembly (Models 15301 & 15501)
556674	Oil Drain Fitting
523194	Capacitor (all models)
523195	Oil Fill Plug
523197	Base (all models)
556675	Housing Gasket (all models)

Part No.	Description
556676	Exhaust Fitting (all models)
523208	Inlet Fitting Adapter, 3/8" External Flare x 1/2" Internal ACME
525402	Inlet Fitting, 1/4" and 3/8" External Flare
525488	Inlet Fitting Adapter, 3/8" Internal Flare x 1/2" External ACME
557048	Inlet Fitting Adapter, 1/4" Internal Flare x 3/8" External Flare
556677	Power Cord (Models 15300 & 15500)
556678	Power Cord (Models 15301 & 15501)

15400 & 15600 Parts List

Item No.	Part No. 15400	Part No. 15600	Description
1	40572	40572	Oil Drain Cap (qty. 6)
2	48116	48116	Oil Drain Kit (includes oil drain cap)
3	15337	15337	Module Cover Kit (includes items 2, 4, 5)
4	15371	15371	Oil Fill Cap (includes gas ballast valve)
8	15364	555124	Intake Fitting (includes intake caps)
9	555133	555133	Intake Caps 1/4", 3/8" and 1/2" flare; 1 ea.)
11	15338	15338	Vent Bolt (includes o-rings)
12	15366	15366	Handle, Power Cord, Switch Assembly
13	15365	15370	Motor
14	48103	48103	Coupling
15	15368	15368	Iso-Valve™ Assembly
16	15369	15369	Base and Foot Assembly
17	15547	15548	Replacement Module (includes Nos. 1 through 7)
--	15367	15367	Seal Replacement Kit (not shown)





LD Series Replacements Parts

Part No.	Description
 F00E901446	Sensor Filters (5PK)
 F00E901447	Leak Test Vial
 F00E901448	Sensor Tip
 F00E901451	REPL, Sensor with Filter (LD3, LD5, LD7)
 F00E901452	Parts Kit (LD3, LD5, LD7)
 F00E901450	Carrying Case (LD3, LD5, LD7 OR LD9-TG)

TIFZX Replacements Parts

Part No.	Description
 TIFZX-2	Replacement Heated Pentode® Sensor
 TIFZX-3	110V-60 Hz Battery charger (North and South America)
 TIFZX-3E	230V-50 Hz Battery charger (Europe, Asia)
 TIFZX-6	Remote Battery charging base, 110V-60 Hz (Optional)
 TIFZX-7	Nickel-Metal hydride (NiMH) battery pack
 TIFZX-10	Flexible probe (includes probe tip)
 TIFZX-11	12V DC battery charger
 TIFZX-14	Filter and O-ring
 TIFZX-15	Filter elements (5 pack)
 TIFZX-55	Soft carrying case

4503.....	19	13204.....	15	18562.....	20	40449.....	13	68360A.....	13
4504.....	19	14322.....	20	18706.....	20	40464.....	14	68372A.....	13
6502.....	19	14322-1.....	20	19498.....	3	40553.....	14	68396A.....	13
6512.....	18	14322-2.....	20	19776.....	3	40563A.....	14	68420.....	13
6514.....	18	14322-3.....	20	25200B.....	3	40572.....	14	69036A.....	13
6515.....	19	14322-4.....	20	25201B.....	3	40653B.....	13	69060A.....	13
10102.....	14	14322-5.....	20	30036.....	13	40677.....	13	69072A.....	13
10250.....	14	14322-6.....	20	30060.....	13	40859.....	7	69096A.....	13
10292.....	14	14322-7.....	20	30072.....	13	41670.....	11	100343.....	1, 2
10469A.....	14	14450.....	19	31036.....	13	41671.....	11	LD3.....	5
10470A.....	14	14773.....	14	31060.....	13	41676.....	12	LD5.....	5
10596.....	7	14774.....	14	31078.....	13	41698.....	13	LD7.....	5
10597.....	7	14998.....	19	31079.....	13	42022.....	18	RAVG-1.....	17
10778.....	14	15120A.....	16	31096.....	13	42022.....	20	RG3.....	2
10945.....	7	15121A.....	16	32036.....	13	42024.....	18	RG3-230.....	2
10994.....	18	15150.....	17	32060.....	13	42028.....	18	RG6.....	1
11724.....	12	15195.....	14	32072.....	13	42035.....	18	RG6-230.....	1
11725.....	12	15300.....	17	32096.....	13	42040.....	18	SK-5001.....	1, 2
11734.....	12	15301.....	17	33036.....	13	42062.....	18	SK-6002.....	1, 2
11735.....	12	15400.....	16	33060.....	13	42071.....	18	RAVG-1.....	17
11744.....	12	15401.....	16	33096.....	13	42073.....	18	TIF785.....	9
11745.....	12	15434.....	16	38172A.....	13	42080.....	18	TIF7201.....	9
11754.....	12	15495.....	14	38272A.....	13	42083.....	18	TIF7610.....	9
11755.....	12	15500.....	17	38372A.....	13	42090.....	18	TIF7612.....	9
11794.....	12	15501.....	17	39072A.....	13	42160.....	6	TIF7620.....	9
11795.....	12	15555.....	14	40082.....	13	42162.....	6	TIF8800X.....	6
11797.....	12	15600.....	16	40083.....	13	42170.....	20	TIF8800X-E.....	6
11798.....	12	15601.....	16	40084.....	13	42216.....	11	TIF8801.....	6
11804.....	12	15800.....	17	40120-R410A.....	20	42248.....	11	TIF8801.....	6
11805.....	12	16215.....	8	40152.....	11	42266.....	11	TIF8802.....	6
11824.....	12	16330.....	8	40153.....	11	42278.....	11	TIF8802E.....	6
11825.....	12	16332.....	8	40156.....	20	42296.....	11	TIF8803A.....	6
11835.....	12	16336.....	8	40169.....	11	43160.....	10	TIF8805.....	6
11854.....	12	16337.....	8	40170.....	11	43166.....	10	TIF8806A.....	6
11855.....	12	16338.....	8	40174.....	11	43180.....	10	TIF8806B.....	6
11874.....	12	16451.....	7	40232.....	13	43186.....	10	TIF8808.....	6
11875.....	12	16455.....	7	40288.....	14	43230.....	7	TIF8809.....	6
11910.....	10	16458.....	7	40291.....	14	43240.....	7	TIF8818.....	6
11920.....	10	17121.....	3	40302.....	14	44997.....	19	TIF8900.....	6
12294.....	19	17506.....	3	40330.....	14	65060.....	13	TIF8900-E.....	6
12458.....	19	17572.....	3	40336.....	14	65160.....	13	TIF9010A.....	4
12479.....	18	17605.....	3	40352.....	13	65260.....	13	TIF9020A.....	4
12540.....	20	17800C.....	3	40380.....	14	65360.....	13	TIF9030.....	4
13067.....	13	17800C-230.....	3	40384.....	14	68020.....	13	TIF9031.....	4
13110.....	14	18180.....	13, 14	40386.....	14	68118.....	20	TIF9055.....	4
13119.....	15	18403.....	19	40396.....	14	68136A.....	13, 20		
13142.....	14	18451.....	14	40398.....	14	68160A.....	13		
13143.....	14	18501.....	14	40410.....	14	68172A.....	13		
13144.....	14	18511.....	14	40416.....	14	68196A.....	13		
13145.....	14	18512.....	14	40417.....	14	68236A.....	13		
13148.....	13	18513.....	14	40419.....	14	68260A.....	13		
13149.....	12	18514.....	14	40420.....	14	68272A.....	13		
13184.....	18	18560.....	14	40422.....	14	68296A.....	13		
13203.....	15	18561.....	14	40427.....	14	68336A.....	13		

BOSCH AUTOMOTIVE SERVICE SOLUTIONS INC.
28635 MOUND ROAD
WARREN, MI 48092 USA

CUSTOMER SERVICE
PHONE 800-327-5060
FAX 866-287-7222

TECH SUPPORT
PHONE 800-327-5060
FAX 866-287-7222

www.robinair.com

ROBINAIR HVAC/R SERVICE TOOLS CATALOG
© 2019 Bosch Automotive Service Solutions Inc.