

MUSCLE TOOLS Q2 2024 EDITION

HIGH TECH TO HARD TECH

 **BOSCH**  **ROBINAIR**  **OTC** *The most advanced diagnostics, tools & equipment*



EXCLUSIVE PROMOTION FOR OTC ENCORE SCAN TOOL OWNERS

You could be eligible for a **FREE ADS 525X** scan tool or a **\$500** rebate when you upgrade



Scan code or click learn more below and enter your Encore serial number to get your exclusive offer. [Learn More](#)

OTC TOOLS TO BEAT THE FLAT RATE



7168 Jimmy Bar

Forged from chrome alloy steel and heat treated to resist bending and breaking.

[Watch the video](#)



CA7149 Ball Joint Connected Adapter Starter Kit

Work smarter, not harder.

[See it in action](#)

Enhanced A/C

80211TMP
Bluetooth temp probes master kit

[More on page 7](#)

#BoschSolves

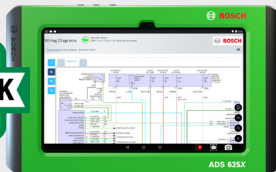
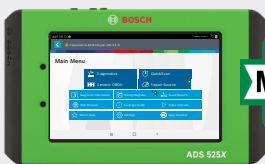
Solving a vehicle that is losing power and has a check engine light on

Take a look at a vehicle that has a loss of power and a check engine light on by utilizing a Bosch ADS 525X or ADS 625X Diagnostic Scan Tool, the Bosch SMT 500 Leak Tester and a Bosch Throttle Body.



See the solution from
#BoschSolves
[Watch the video](#)

Featured and compatible products



ADS 525X Diagnostic Scan Tool

The extreme diagnostic scan tool with a modular software subscription, extreme coverage and weeks of battery life.

ADS 625X Diagnostic Scan Tool

Flexible subscriptions, ADAS software options, large 10.8" high resolution display, charging station and more.



SMT 500 Leak Tester

On Board Air compressor eliminates need for shop air or inert gas tank during use.



Bosch Throttle Body

Bosch Throttle Bodies are manufactured on original equipment (OE) production lines with best-in-class quality.

See how #BoschSolves real-world problems technicians see in their shop every day



Watch the video series
Visit [boschdiagnostics.com/
bosch-solves/collection](https://boschdiagnostics.com/bosch-solves/collection)



3824A
ESI[truck] Heavy Duty Diagnostic Solution
 Truck, engine, and system coverage

- HDS 1000 10" touchscreen Windows® 10 tablet
- Ruggedized drop-tested tablet designed for the garage environment
- Enhanced bidirectional controls
- Injector coding, forced DPF regen, VGT relearning, special tests, component actuations & more
- Proprietary ESI[truck] software saves valuable labor time with intuitive software – scan procedures the same for a Sprinter van to a Terex Titan dump truck
- All-in-one subscription unlocks access to full color-wiring diagrams, live data stream, and repair information for all makes and models
- All diagnostic functions continue after subscription expiration*

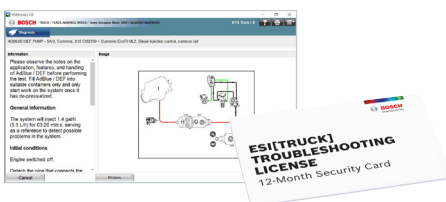
- **Truck brands:** Freightliner, International, Kenworth, Mack, Volvo, Peterbilt, Sterling, Western Star, and more
- **Engine brands:** PACCAR, Perkins, Detroit Diesel-MBE, Mack, Navistar, Caterpillar, Deutz, MTU, and more
- **System coverage:** Transmissions, brake systems, trailer ABS, exhaust treatment, and more

Expert-level diagnostics

- Automatic vehicle ID
- Fault code reading, reporting, clearing
- Diesel particulate filter (DPF) regeneration
- Cylinder cut-out
- Injector coding and trim files
- Key component actuations
- Special tests
- Vehicle parameter modifications
- Includes 30-day free Troubleshooting & Repair Trial

3824A-TBL
Heavy Duty Tablet Upgrade

- Everything you need to upgrade an existing 3824 ESI[truck] Tablet to the new and improved 3824A model
- Windows 10 Touchscreen tablet



3824-08R
Troubleshooting & Repair Subscription

- Faster, more efficient heavy duty vehicle repairs
- 13,000+ procedures guide user through each step to troubleshoot vehicle issues
- Procedures by DTCs or by vehicle symptoms
- Technical Service Bulletins (TSBs) included

*Applies to Truck (3824A and 3824-08) and OHW (3824CBL-UPG and 3824-080HW) Coverage

The Bosch ESI[truck] platform is unlike any other in the industry, taking heavy duty diagnostics to the next level.

3824CBL-UPG
ESI[truck] Off-Highway Upgrade Cable Kit with Introductory Software License

Add off-highway vehicle and machinery coverage for multiple manufacturers to your 3824A ESI[truck] scan tool.

- **Coverage included for:** Construction equipment, agricultural vehicles, stationary engines, street sweepers and more
- **Manufacturer coverage:** Caterpillar, John Deere, Kubota, Perkins, Volvo, Massey Ferguson, SISU, Deutz, Deutz-Fahr, MTU, and more
- **System coverage:** Gearbox, HVAC, engine, steering, hydraulic systems, suspension, electronic modules, antipollution, central computer and more
- **Diagnostic coverage:** Manual processes, diagnosis info, measurable values, component actuations, ECU data, parameter IDs (PIDs), calibrations and resets, system technical data, wiring diagrams, vehicle technical data and vehicle maintenance info

Kit contents:

- 10 cables for machinery, construction equipment, agricultural vehicles and more
- ESI[truck] off-highway software package with full diagnostic capabilities. Introductory off-highway software expires when your ESI[truck] heavy duty truck software expires
- Software renewals can be done simultaneously, ensuring continuous HD truck and off-highway vehicle coverage



3824BSC
ESI[truck] Software and Adapter Kit

- Includes the ESI[truck] platform features, adapters, software, and coverage for use on your own Windows 10 device
- ESI[truck] diagnostic software with the functions and aftermarket coverage techs need, RP1210 Data link adapter, 6 and 9 pin cables, and HD/OBD II cables



3824-08
ESI[truck] 1-Year Renewal License

- 1-Year (12-month) renewal license for existing ESI[truck] user



3824-080HW
ESI[truck] Off-Highway 1-Year Software License

- 12-months of off-highway diagnostic coverage, including all coverage updates
- Used to renew initial software included with Off-highway upgrade cable kit with introductory software license



For more information on software updates and off-highway coverage upgrades, visit boschdiagnostics.com

Off-highway cable upgrade kit and off-highway software only compatible with 3824A and 3824BSC ESI[truck] diagnostic tools. Customer must first purchase Off-highway upgrade cable kit with introductory software (3824CBL-UPG) prior to purchasing or activating Off-highway 1-year software license (3824-080HW)

Battery and Electrical System Analyzers



0684010050480

FSA 050 CAT IV, CAT III Insulation Tester

Convenient, wireless testing for electric and hybrid drives (Cars, trucks, SUVs, etc). The FSA 050 CAT IV, CAT III Insulation Tester functions as a standalone multimeter or high-voltage meter. Alternatively, transmit the test data wirelessly to your Windows device for further review and analysis.

Future-proof as a standalone device or as a special accessory.

Common use cases:

- High voltage electric AC compressor
- High voltage shorts to ground
- Battery Packs
- Determine Isolation or insulation faults



F00E9001013CM

MMD 540H CAT III Multimeter

Auto-ranging digital multimeter for use in diagnostics of electronic circuits (automotive, fleet, motorcycle, marine or small engine)

The MMD 540H offers:

- CAT III (1000v) safety rating for hybrid vehicle circuits
- Peak, Min/Max readings as fast as 1 millisecond
- Inductive RPM clamp for conventional and DIS ignition systems
- Fused diagnostic test leads provide safe troubleshooting (up to 20 amps) at the circuit fuse location
- K-Type thermocouple for quick temperature measurement
- Large LCD display with bright backlighting and auto shutdown
- Rugged nylon case with handle for storage



3920

3920 VET 100 Circuit Analysis Tool

Quickly identify electrical issues in failed circuits

- Perfect tool for Data stream analysis using your scan tool
- Identify failed circuit component, wiring or PCM
- Simulates the sensor you are diagnosing by inputting a determined voltage at the sensor location
- Allows input voltage from .5VDC -7VDC in .5VDC increments
- Use your scan tool to verify if correct voltage is being applied to circuit
- Bypass sensor to send desired voltage back to PCM
- Works with 12V and 24V systems with vehicle voltage displayed. Also includes a "flashing" low battery voltage indicator

NEW



BAT6120-US

BAT 6120-US Battery Charger & Power Supply

High-Power 12 V Battery Charger and 120 Amp Power Supply.

- Supports 120 A DC Continuous Output (@AC120 V~240 V, 25°C)
- Important for late model vehicles which have higher current requirements to maintain stable power supply during programming
- Supports Flooded/AGM/EFB/GEL/Lithium (LFP) batteries
- 12 V Lead Acid Battery Charge. Charging Diagnosis / 12 V Lithium Battery Charge, BMS Wake Up
- Maximum power output: up to 1750 W
- Flexible operation modes to fulfill customer needs
- Fits neatly on a desk, bench, or showroom floor. Also wall-mountable



3926

BAT 35 Vehicle Computer Memory Saver

BAT 35 maintains the memory of the on-board vehicle computer to prevent losing memory settings when you disconnect a battery.

- Retain computer memory and on board memory sets such as: keyless entry codes, seat memory, digital radio settings, clocks, car alarms etc.
- Includes 12V, 7amp hour lead acid, sealed battery for long life expectancy
- Six LED indicator lights, three for charging functions and three for power storage conditions for ease of use
- Built-in OBD II cable for vehicle power supply while vehicle battery is disconnected



BAT155

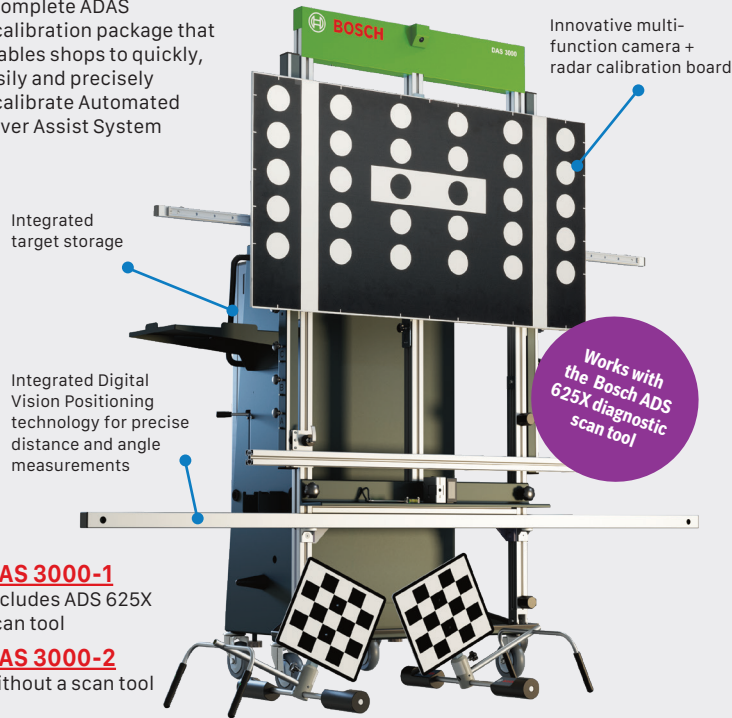
BAT 155 Heavy Duty Battery and Electrical System Analyzer

- 100 - 6,000 Cold Cranking Amp (CCA) Test Capacity
- Enables Testing Battery Packs (Multiple Batteries connected together) in the vehicle
- Infrared Temp Sensor for measuring battery temp (increases accuracy of CCA measurement)
- Optional Amp Probe and Voltmeter
- Tests 6V, 12V batteries and 12V, 24V charging systems

ADAS Recalibration System

DAS 3000

A complete ADAS recalibration package that enables shops to quickly, easily and precisely recalibrate Automated Driver Assist System



DAS 3000-1
includes ADS 625X scan tool

DAS 3000-2
without a scan tool

Innovative multi-function camera + radar calibration board

Integrated target storage

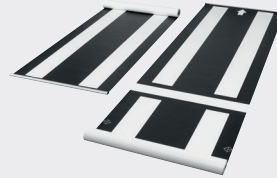
Integrated Digital Vision Positioning technology for precise distance and angle measurements

Works with the Bosch ADS 625X diagnostic scan tool

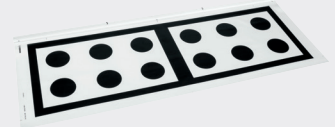
Calibration Mats

Brand specific equipment for the proper calibration of the Rear and Surround View cameras according to the OEM specifications implemented by Bosch routines and workflows.

Near Range Camera Systems for Volkswagen group

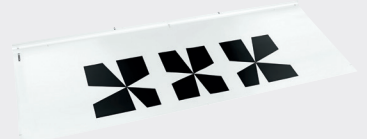


Calibration set for 360° Cameras Generation 2:
CTA 500-1



Calibration set for Rear Camera:
CTA 501-1

Near Range Camera Systems for Mercedes-Benz



Calibration set for Rear Camera:
CTA 511-1

Leak Testers

Safe and cost-effective leak detection solutions for passenger and heavy duty vehicles



SMT 500

SMT 500 Portable Leak Detector

- On Board Air compressor eliminates need for shop air or inert gas tank during use
- Variable flow control detect leaks as small as 0.01" in sealed systems
- Pressure decay testing
- Compact, lightweight design (ultra-portable at 11 lbs)



SMT 300

SMT 300 LeakTamer II EVAP & Diagnostic Smoke Machine

Multi-purpose tester designed not only for EVAP testing but for leak detection in any low pressure closed system including oil leaks, exhaust leaks, wind leaks, water leaks, EGR leaks and many more

- Fully featured machine with graduated smoke flow control valve, air flow meter, and pressure/vacuum decay gauge
- Full complement of accessories and storage case included



1699500000

HPT 500 High Pressure Leak Tester

- Produces leak detection "smoke" at higher pressure than standard machines (up to 20psi) for higher pressure systems
- Higher flow rate fills the system with smoke up to 5 times faster
- Ideal for finding leaks in exhaust after-treatment systems
- Test entire system, from intake to exhaust, in one 15 minute test
- High-pressure and large volume systems found in heavy-duty truck and turbocharged passenger vehicles

TPA 300 TPMS Programming Tool

Compatible with any Bosch manufactured diagnostic tool



3934

- Activate and read TPMS sensor data, program sensors, check remote keyless entry signal and display sensor data in seconds
- Perform OBD II relearns within minutes when paired with a compatible Bosch manufactured diagnostic scan tool
- Full database of indirect, manual and auto relearn procedures
- Intuitive, full-color display with easy vehicle lookup by make, model and year
- Supports all known OE and aftermarket programmable sensors for all light vehicles
- Includes 3 years of software updates for the latest features and coverage

Are you missing YF revenue?



What do I need to service R-1234yf systems?

- › A new machine meeting SAE J2843 standard; Robinair's AC1234-4 or AC1234-9
- › A new leak detector meeting SAE J2913 standard; Robinair's LD3, LD5 or LD7
- › A syringe-type oil injector to inject oil back into the system; Robinair's 18465
- › Optional tracer gas leak detector to reduce cost searching for leak; Robinair's LD9-TG

AC1234-9
Connected

A New Leak Detector

Your existing leak detector may not recognize R-1234yf, meaning you may not catch an expensive refrigerant leak. Invest in one that meets SAE J2913 and J2791 standards.

- › LD3 leak detector automatic calibration and audible alerts
- › LD5 leak detector with bar graph mode and color display
- › LD7 premium leak detector with bar and pinpoint graphing modes and detects both R134a and R1234yf.



LD7 shown

New Syringe-Type Oil Injectors

1234yf systems have different fittings and couplers, requiring a new syringe-type oil injector to put oil back into the system. Current SAE standards for 1234yf service does not allow automatic oil injection on a machine.

- › 18465 PAG-labeled 1234yf injector for low-voltage systems in gas and diesel vehicles
- › 18470 POE-labeled 1234yf injector for electric and hybrid vehicles



18465 shown



80211TMP
Bluetooth temp probes master kit

- Read and track temperatures from multiple locations from your A/C machine
- Use up to 2 probes per compatible Robinair machine
- Enables WiFi and Bluetooth capabilities on NI and AC1234-4 machines

80211VCI
VCI master kit + database

- Enables WiFi and Bluetooth capabilities on NI and AC1234-4 machines
- Wirelessly gather and transmit vehicle year, make and model info to your compatible Robinair machine
- Includes current-year refrigerant capacity database to quickly determine correct refrigerant charge, oil type and oil capacity
- Also reads generic OBDII codes to help troubleshoot A/C system issues

New 2024 A/C system capacity databases

- Confirm AC system charge capacities directly from your Robinair card for R-134a and R-1234yf systems, sold separately
- Includes charge amounts and component oil capacities for vehicle model years 1999 – 2023 using R-134a refrigerant and vehicle model years 2013 – 2023 using 1234yf refrigerant
- Database helps ensure the vehicle system is charged with the correct amount of oil, per factory and OEM specification

34001 R-134a database for 34998 machine

34412-G R-134a database for 34288NI, 34788NI, 34788NI-H, and 34988NI machines

R-1234yf database

34002 R-1234yf database for AC1234-9 machine

34413-E R-1234yf database for AC1234-4 machine

34414-C R-1234yf database for AC1234-6 machine

What wireless accessories fit my machine?

A/C Machine	Non-wireless A/C Machine		Wireless Enabled A/C Machine	
	VCI	Temp Probes	VCI	Temp Probes
34288NI, 34788NI, 34788NI-H, 34988NI	80211VCI	80211TMP	ACS-250*	80213 or 80212*
34998, AC1234-9	—	—	ACS-250**	80213 or 80212
AC1234-4	80211VCI	80211TMP	ACS-250*	80213 or 80212*

*Use of ACS-250, 80212 or 80213 on NI or AC1234-4 requires machine first be WiFi/Bluetooth enabled using either 80211TMP or 80211VCI master kit

**Database purchase required for vehicle refrigerant capacity

Find leaks and diagnose system issues faster

Connected accessories, leak detectors, refrigerant analyzers and tracer gas detectors for R-134a and R-1234yf service



16995
R-ID Plus refrigerant identifier/analyzer

- Analyze R-134a and R-1234yf refrigerant for purity and contamination
- Prevent contaminated refrigerant from being pulled into your machine
- Includes printer to add refrigerant purity to service report
- R-134a and R-1234yf tank adapter; R-134a and R-1234yf hoses included
- Available as 16990 R-ID without printer



EVDC®100
A/C Electronic Variable Displacement Compressor Tester

- Control signal to variable compressor to accurately diagnose system problems
- Quickly diagnose and verify valve function, lowering total repair time and costs
- Includes connect adapters for both old and newer style compressors
- Heavy duty battery clips and cable provides power from vehicle battery, eliminating the need for batteries
- Made in the USA



LD7
Premium refrigerant leak detector

- Detects R-1234yf and R-134a leaks for use on most vehicles
- Sweep, bar graph and line graph modes make finding leaks faster, easier
- Features audible detection alert, UV LED lights for use with UV dye and inspection light
- Sensor life up to 10 years for reliable leak detection
- Available as LD3 and LD5 versions



LD9-TGKIT
Tracer gas leak detector service kit

- Test systems for leaks under pressure, instead of vacuum
- YF systems can hide leaks under vacuum, requiring pressure testing
- 95% Nitrogen / 5% hydrogen tracer gas mix helps find leaks faster
- Kit includes 1234yf coupler, 134a coupler, Tracer gas detector, hose and Tracer gas regulator
- Available as LD9-TG, Tracer gas detector only

Combining Simple Operation with Superior Accuracy

These machines will test, recover and recharge R-134a and R-1234yf automotive A/C system quickly and accurately.

R-134a Systems

R-1234yf Systems



Features	34288NI	34788NI	34788NI-H	34998	AC1234-4	AC1234-9
Fully Automatic Function: Program to recover, vacuum, leak test and charge without operating panel valves.	Manual Valves	✓	✓	✓	✓	✓
Automatic fluid drain/inject	Oil drain	Oil drain/inject*	Oil drain	Oil drain/inject, dye inject**	Oil drain	Oil drain
A/C System Flush: Flushes a vehicle's A/C system with refrigerant, eliminating any residual oil or other liquid. (Flushing adapters not included)	–	–	✓	✓	✓	✓
Save & print before and after service data: Allows the user to store before and after service information by vehicle and print this information to provide to a customer.	–	✓	✓	✓	✓	✓
Visual & Audible Alarm: Notifies the user when service is complete, or if a problem has occurred.	–	✓	✓	✓	✓	✓
Vacuum Leak Test: Monitors level after evacuation, informs of possible leak.	–	✓	✓	✓	✓	✓
Automatic Air Purge: Eliminates system-damaging air without monitoring gauges or opening valves.	✓	✓	✓	✓	✓	✓
Automatic Refrigerant Refill: Maintains a user-selectable amount of refrigerant in an internal vessel and signals when it's time to change supply tank.	–	✓	✓	✓	✓	✓
Vacuum Feature: Defaults to 15 mins, programmable up to 99 mins. "Remaining time" is displayed.	✓	✓	✓	✓	✓	✓
Multilingual display	4.3" color LCD	4.3" color LCD	4.3" color LCD	10.5" hi-res touch screen	4.3" color LCD	10.5" hi-res touch screen
Refrigerant Charging:	Low only	High, low or both	High, low or both	High, low or both	High, low or both	High, low or both
Refrigerant Management System: Displays refrigerant use and monitors remaining filter life. Prompts appear when 1/3 of filter life remains.	✓	✓	✓	✓	✓	✓
Electric Vehicle: Capable of servicing high voltage electric compressor A/C systems.	–	–	✓	–	✓	✓
Printer	30038	30038	30038	Mopria Print Service wireless printing	30038	Mopria Print Service wireless printing
Bluetooth temp probes: Dual-zone temp recording and reporting	80211TMP	80211TMP	80211TMP	80212 or 80213	80211TMP	80212 or 80213
Bluetooth VCI: Reads YMME and refrigerant capacity	80211VCI	80211VCI	80211VCI	ACS-250***	80211VCI	ACS-250***

* One oil bottle. ** Two oil bottles and one UV dye bottle. ***ACS-250 requires purchase of 34001 or 34002 database to read YMME and display refrigerant capacity

All machines use 34724 filter and 13172 maintenance kit

Syringe-type Injectors

Oil injectors for YF, EV and hybrid vehicles

Use these syringe-type injectors to add oil to a fully pressurized A/C system. Fill the barrel with the amount of oil needed, connect the injector, and press the plunger. Not recommended for UV dye injection.



R-134a Oil Injectors

18480 PAG labeled for gasoline and diesel vehicles

18490 POE labeled for hybrid and electric vehicles

R1234yf Oil Injectors

18470 POE-labeled 1234yf injector for electric and hybrid vehicles

18465 PAG-labeled 1234yf injector for low-voltage systems in gas and diesel vehicles

Refrigerant Recovery



25700

Contaminated Refrigerant Recovery Machine

The Robinair 25700 is a contaminated recovery only device that is designed to remove contaminated refrigerant from vehicles that are equipped with R-1234yf and R-134a A/C systems.

17990

Contaminated Refrigerant Tank Assembly



TESTED AND TRUSTED SAFETY FOR LIFE

All jacks are covered by a limited lifetime warranty



ONE-HANDED BALL JOINT PRESS SETUP



CA7149 CONNECTED ADAPTER STARTER KIT

- 7 connected cups & adapters hold securely to C-frame and drive screw
- 235+ vehicle models covered, from Honda Accord to Ford F-350s
- Backwards compatible with all OTC ball joint kits and adapters



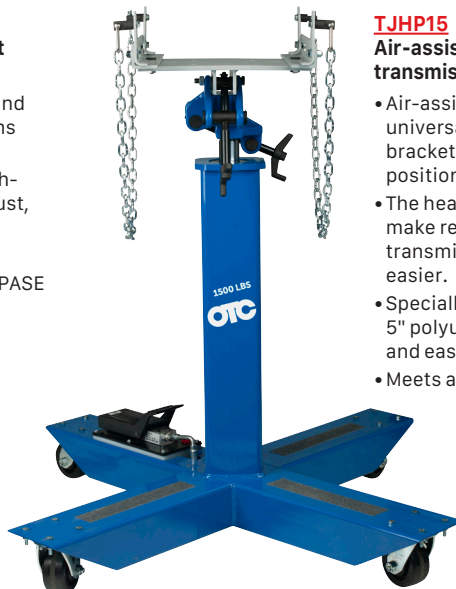
CA6630 CONNECTED ADAPTER PROFESSIONAL KIT

- 25 connected cups & adapters hold securely to C-frame, making R&I easier
- 600+ vehicle models covered, including compact cars up to HD trucks
- Fully illustrated manual with adapter callouts, diagrams and instructions by vehicle model
- Backwards compatible with all OTC ball joint kits and adapters

Navistar Tools and Diesel Engine Adapters



- TJH10**
1,000-lb Capacity High-Lift Transmission Jack
- Tilting head for easier R&I and positioning of transmissions and other components
 - Hydraulic system uses flash-chromed rams to prevent rust, for long shop life
 - Limited lifetime warranty
 - Meets all the newest ASME PASE safety standards



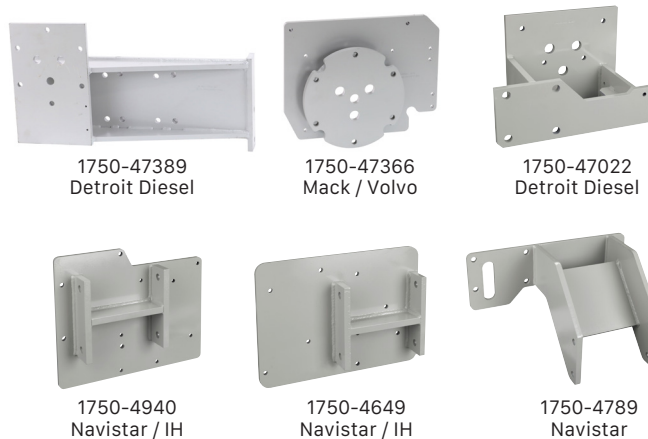
- TJHP15**
Air-assisted 1,500-lb capacity high-lift transmission jack
- Air-assist high-lift transmission jack with universal saddle and adjustable corner brackets and safety chains for optimum positioning of the load.
 - The head tilts front to back and side to side to make removal and installation of transmission and driveline components easier.
 - Specially designed with a wide leg base and 5" polyurethane swivel wheels for stability and easy maneuvering.
 - Meets all ASME PASE-2019 safety standards.

Heavy Duty Engine Stand and Engine Plates



- 1750A**
6000 LB. Revolver Diesel Engine Stand
- 96 to 1 ratio worm and gear set rotates components a full 360°; handle locks in any position.
 - Includes 205061 universal mounting plate for use with individual engine adapter plates.

1750
Engine stand without universal engine adapter assembly



1750-47389
 Detroit Diesel

1750-47366
 Mack / Volvo

1750-47022
 Detroit Diesel

1750-4940
 Navistar / IH

1750-4649
 Navistar / IH

1750-4789
 Navistar

Navistar and Detroit Diesel adapters

Item	Description	Application	Brand	Component	Requires use of 205061 plate
1750-47389	Detroit Diesel engine adapter plate	DD13 & DD15 engines	Detroit Diesel	Engine	No
1750-47366	Mack / Volvo engine adapter plate	MP7 / D11 engines	Mack / Volvo	Engine	No
1750-4940	Navistar / IH MaxxForce engine adapter plate	2010 - 2016 Navistar MaxxForce DT, MaxxForce 9, MaxxForce 10 engines	Navistar / International Harvester	Engine	Yes
1750-4649	Navistar / IH MaxxForce engine adapter plate	2004 - 2009 International Harvester DT466, DT570, HT570; Navistar MaxxForce DT, MaxxForce 9, MaxxForce 10 engines	Navistar / International Harvester	Engine	Yes
1750-4789	Navistar MaxxForce engine adapter plate	2007 - later MaxxForce 11, MaxxForce 13 engines	Navistar	Engine	Yes
1750-47022	Detroit Diesel MBE 900 engine adapter plate	Detroit Diesel 2004 - 2007 MBE 900 engines	Detroit Diesel	Engine	No

Safely lift and hold Class I, II and III vehicles - up to 3.5 tons



LDJA2-SET

LDJA2 2-ton aluminum racing jack

- Lift compact sedans to small crossovers
- Light, sturdy aircraft aluminum with carry handles is ideal for service trucks and portability

SA02 2-ton aluminum jack stands

- Pin-style jack stand for fast, secure vehicle holding
- Aircraft aluminum construction for rust-free performance

LDJA2-SET

- Includes LDJA2 2-ton aluminum jack and SA02 2-ton aluminum stands

NEW



LDJ3-A

LDJ3-A 3-ton service jack

- Ideal for utility vans, full size sedans, pickups, and SUVs

LDJ35 3.5-ton steel service jack

- Safely handles large SUVs and crossovers to 3/4-ton pick-ups
- Rolled edges add strength to resist twisting for larger loads



S03

S04

S03 3-ton steel jack stands

S04 4-ton steel jack stands

- Ratcheting design cannot be released under load
- Formed and welded steel base with baked enamel finish for strength, corrosion resistance
- S03 and S04 sold as a pair

Service Jacks



	LDJA2	LDJ3-A	LDJ35
Capacity	2-ton	3-ton	3.5-ton
Lifting range	3-1/4" (saddle removed) - 18-5/8"	2.95" - 20"	5.2" to 21.9"
Padded handle length	47.6"	46.25"	50" spring-loaded padded lower handle
Footprint	11.875" x 25.125"	13.5" x 28.5"	14.5" x 28.5"
Reach	72.75"	78.5"	78.5"
Saddle	4-1/2" dia., round	4" dia., steel crown	6" dia., flat steel, rubberized, pinned to lifting arm
Casters	4; 2.5" front fixed (2), 1.75" rear swivel (2)	4; 2.4" front fixed (2), 2.4" rear swivel (2)	4; 3.15" front fixed (2), 2.5" rear swivel (2)
Frame height	6"	6.1"	6.25"

Jack Stands



	SA02 (sold as a pair)	S03 (sold as a pair)	S04 (sold as a pair)
Capacity	2-ton	3-ton	4-ton
Max height	15.44"	17-11/16"	23-13/16"
Min height	9-1/2"	12"	15-1/2"
Footprint	7" round base	8-1/4" x 7-1/2" square base; welded foot pads	Square base; welded foot pads
Adjustment	Pin lock; 6 slots	Ratcheting; 11 teeth	Ratcheting; 11 teeth
Saddle	Flat-top style, 2.17" x 3"	V-notch style, 1" x 3.5"	V-notch style, 1.3" x 4.3"

Covering the big classes for lifting it all



HDJ5

HDJ5 5-ton hydraulic service jack

- Designed to safely lift step vans and bucket trucks
- 3-position handle lays flat, 45° or 90° for storage and use

HDJ5P 5-ton hydraulic service jack with air-assist

- Same as HDJ5, with air/hydraulic assist to reduce effort to raise, lower vehicles



HDJ10

HDJ10 10-ton hydraulic service jack

- Ideal for bucket trucks and school buses
- Rugged steel frame and extra-large wheels for durability and strength

HDJ10P 10-ton hydraulic service jack with air-assist

Same as HDJ10, with air/hydraulic assist to reduce effort to raise, lower vehicles



HDJ20

HDJ20 20-ton hydraulic service jack

- 3-position spring-loaded handle can lay flat, 45° or 90°
- Foot and hand pump options to raise load quickly

HDJ20P 20-ton hydraulic service jack with air-assist

Same as HDJ20, with air/hydraulic assist to reduce effort to raise, lower vehicles

5, 10, and 20-ton heavy-duty jacks



5, 10, 20-ton heavy-duty jacks

	HDJ5	HDJ5P	HDJ10	HDJ10P	HDJ20	HDJ20P
Capacity	5-ton	5-ton air-assist	10-ton	10-ton air-assist	20-ton	20-ton
Lifting range	6" to 22"	5-7/8" to 22"	6.3" to 22"	6-3/8" to 22"	7-1/2" to 23.8"	7-1/2" to 23.8"
Air pressure	—	80–120 PSI	—	80–120 PSI	—	80 - 120 PSI
Handle length	43" 3-position with lock and release controls	45.4" 3-position with lock and release controls	43-1/4" 3-position with lock and release controls	45.4" 3-position with lock and release controls	47-1/2", 3-position spring-assisted locking	47-1/2", 3-position spring-assisted locking
Footprint	15" x 56"	14.2" x 55.5"	18" x 60"	18.9" x 60.8"	18-1/8" x 61-3/8"	18-1/8" x 61-3/8"
Reach	47"	87"	51"	90"	110.4"	110.4"
Saddle	5-1/8" dia., round	5.1" dia., round	6" dia., round	5-3/4" dia., round	6-1/2" dia., steel crown	6-1/2" dia., steel crown
Casters	4; 4.4" fixed front (2), 2.8" mid-body swivel (2)	4; 4.4" fixed front (2), 2.8" mid-body swivel (2)	4; 5.6" fixed front (2), 3.6" mid-body swivel (2)	4; 5.6" fixed front (2), 3.6" mid-body swivel (2)	6; 4 front fixed; 2 mid-body swivel	6; 4 front fixed, 2 mid-body swivel
Frame height	7.9"	7.5"	9.8"	9.8"	10.2"	10.2"



NEW



NEW



S06 6-ton steel jack stands

- Ratcheting design cannot be released under load
- Formed and welded steel base with baked enamel finish for strength, corrosion resistance

S012 12-ton jack stands

- Pin-style stand increases contact points for increased holding strength
- Form-fit saddle and wide base ensures stability of heavy loads

S020 20-ton steel jack stand

- Large 15-1/2" square base safely holds up to 40,000 lbs
- Dual pin-style stand with four adjustment positions

S022 22-ton steel jack stands

- 11" flat square base prevents sinking into concrete or other surfaces
- Large flat base rated to safely hold up to 44,000 lbs
- Pin Style Stand with 3 adjustment positions

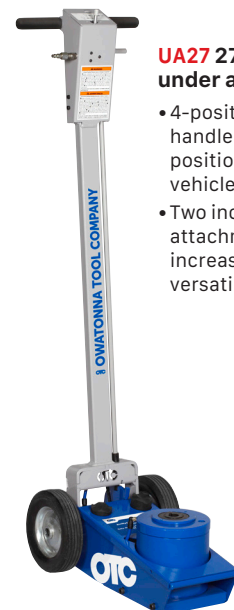
Heavy-duty stands	S06 (sold as a pair)	S012 (sold as a pair)	S020 (single)	S022 (sold as a pair)
Capacity	6-ton	12-ton	20-ton	22-ton
Max height	23-11/16"	27-1/2"	24"	19-7/8"
Min height	15-5/8"	17-1/2"	15-1/4"	13-7/8"
Footprint	11-9/16" x 10-3/8" square base; welded foot pads	12-1/8" x 10-7/8" plus-sign style flat base	15-1/2" square base	11" square base, flat for maximum ground contact
Adjustment	Ratcheting; 11 teeth	Single pin-style	Dual-pin; 4 slots	Pin-style; 3 slots in 3" increments
Saddle	V-notch style, 1.2" x 4.2"	Flat-top horseshoe style	6" dia., round steel	3" x 3-3/4" V-notch

Under-axle service jack	UA22	UA27
Capacity	22-ton	27.5-ton
Air pressure	90 - 145 PSI	90 - 175 PSI
Max height	20-2/3" with longest saddle	21-3/8" using longest saddle
Min height	8.27"	8-1/4"
Handle length	47.24" T handle with lowering lever and air-chuck hook	48-3/4" T handle with lowering lever and air-chuck hook
Footprint	22.63" x 11.73"	22" x 12"
Reach	69.87"	69.87"
Saddle	3" dia., round with center notch, includes 3 lengths	3" dia., round with center notch. Includes 2 saddle adapters
Frame height	8.27"	8.27"
Wheels	2 fixed; 7.88" rubberized steel	2 fixed; 7.88" rubberized steel



UA22 22-ton under-axle hydraulic service jack

- Includes 3 saddle attachments for height adjustment; 3/4" saddle; 1-15/16" saddle; 3-7/8" saddle
- Self-retracting ram activated with handle-end controls



UA27 27.5-ton under axle jack

- 4-position, 48" handle allows easy positioning under vehicles
- Two included saddle attachments increase lifting versatility

New OTC Bottle Jacks

All OTC bottle jacks meet or exceed the newest ASME PASE-2019 safety standards for portable automotive service equipment. This includes a built-in safety valve to prevent overloading, and a stable base to prevent tipping if loaded off-center.

Air assisted jacks can be operated manually or with shop air. Minimum air pressure required is 100 PSI to move ram and lift objects.

NEW

BT12
12-Ton Bottle Jack



NEW

BT30
30-Ton Bottle Jack



NEW

BT12P
12-Ton Air Assisted Bottle Jack



NEW

BT20P
20-Ton Air Assisted Bottle Jack



NEW

BT30P
30-Ton Air Assisted Bottle Jack



Bottle Jacks	BT12	BT30	BT12P	BT20P	BT30P
Capacity	12-ton	30-ton air-assist	12-ton	20-ton air-assist	30-ton air-assist
Lifting range	9-3/8" to 18-5/8"	11" to 17-5/8"	9-1/2" to 18-3/8"	9-7/16" to 17-11/16"	11" to 17-5/8"
Stroke	6"	6-5/8"	6-1/8"	5-7/8"	6-5/8"
Air pressure	-	-	100-120 PSI	100-120 PSI	100 - 120 PSI
Screw extension length	3-1/4"	-	2-3/4"	2-5/16"	2-3/4"
Pumps to extend piston one inch	21	41	21	28	41
Saddle	1-3/4"	2-1/2"	1-3/4"	2-1/8"	2-1/2"
Carry handle	Yes	Yes	Yes	Yes	Yes
Weight	18.9 lbs	43.2 lbs	16.1 lbs	19.5 lbs	43.2 lbs
Warranty	Limited lifetime	Limited lifetime	Limited lifetime	Limited lifetime	Limited lifetime



5950D
Angled Wire Stripping Tool

- Unique design puts stripping dies on the angled tip
- Patented design makes for easier use in hard to reach places
- Works on 12 to 20 AWG wire



5950A
CrimPro™ 4-in-1 Angled Wire Tool

- The angled feature allows access to close quarters and facilitates superior crimps
- Compact 7-inch design used 4 ways
- Gripping nose - to pull, twist, bend, and shape
- Crimper - crimps 12-20 AWG insulated and non-insulated wire
- Stripper - strips 12-20 AWG wire.
- Cutter - ability to make cuts below pivot.



5950S
CrimPro™ 4-in-1 Wire Tool

- Compact 7-inch design used 4 ways
- Gripping nose - to pull, twist, bend, and shape
- Crimper - crimps 12-20 AWG insulated and non-insulated wire
- Stripper - strips 12-20 AWG wire
- Cutter - ability to make cuts below pivot



4247-FR
Suspension Bushing Kit with Pump

- This heavy-duty suspension bushing tool replaces worn-out, rusted, and frozen double-wrap spring bushings faster and easier without heat or damage by providing a 25-ton capacity.
- The tool can be assembled on the spring and bushing without removing the assembly from the vehicle, dramatically reducing service time and not requiring the use of a shop press.
 - Patent-pending design allows for unassisted assembly of the tool onto the spring, eliminating the need to hold any weight of the tool during operation. The press plates and adapters are easily installed which perfectly align the bushing to reduce the chance of misalignment and bushing damage during removal or installation.
 - Kit includes Air/Hydraulic pump, 25-ton hydraulic cylinder, hose w/couplers, complete puller leg/plates, and adapter set.
 - The tool and adapters included in this kit allow for service of the following applications:
 - Hendrickson rear suspensions including: Primaax EX, Comfort Air and FCCC V-Ride (TM) Pivot and D-Pin suspension bushings.
 - Freightliner rear suspensions including: Double and single-wrapped FAS II Airliner rear suspension bushings.



4254-FR
Suspension Bushing Adapter Kit

- This heavy-duty suspension bushing tool replaces worn-out, rusted, and frozen double-wrap spring bushings faster and easier without heat or damage by providing a 25-ton capacity, when used with OTC service sets 4247, 4275, 4261, or 4263.
- The tool can be assembled on the spring and bushing without removing the assembly from the vehicle, dramatically reducing service time and not requiring the use of a shop press.
 - Patent-pending design allows for unassisted assembly of the tool onto the spring, eliminating the need to hold any weight of the tool during operation. The press plates and adapters are easily installed which perfectly align the bushing to reduce the chance of misalignment and bushing damage during removal or installation.
- The adapters included in this kit allow for service of the following applications:
- Hendrickson rear suspensions including: Primaax EX, Comfort Air and FCCC V-Ride (TM) Pivot and D-Pin suspension bushings.
 - Freightliner rear suspensions including: Double and single-wrapped FAS II Airliner rear suspension bushings.
 - For use with OTC service sets 4247, 4275, 4261, or 4263



CA6636-EXT
Connected Adapter Ball Joint Extension

Allows the CA6636 Connected Adapter C-Frame to be oriented in either direction by providing extra clearance for ball joint studs on the drive screw side.



6740
Crankshaft Rear Seal Remover

Save time removing crankshaft rear seals, preventing damage to the block and crank. Prying the crankshaft seal out can damage expensive engine components. This seal remover is a special puller with three jaws designed to grab the inner lip of the seal. The forcing screw attached to the center plate is used to react against the crankshaft end to pull the seal out. This eliminates damage to the block and crank that prying the seal can cause.

- Applications include GM 6.6L Duramax diesel engines found in:
- 2001-Later GMT800 platform vehicles, including Chevrolet Silverado and GMC Sierra 2500HD, 3500
 - 2001-Later GMT900 platform vehicles, including GMC Sierra HD and Chevrolet Silverado HD 2006-2016
- Similar to OE tool #J-44641.



6777
GM Duramax Injector Puller

Assists in removing injectors from the cylinder head without damaging the injector body. Similar to OE tool #EN-49774.

Applications include 2011-later 6.6L Duramax Diesel and Isuzu engines



5098
Cone Washer Removal Adapter

The OTC 5098 is an air hammer attachment designed to break loose cone washers on floating axle dual rear wheel setups. The patented, hollow-center tool slides over the stud, making direct contact with the cone washer to vibrate it free.



1797
Heavy-duty clutch adapter

- A special transmission jack adapter to handle heavy-duty clutch assemblies during service. Universal mounting slots in the base for a universal fit on most high and low-lift transmission jacks. The built-in splined adapter mount rotates easily to help align to the clutch spline and align the clutch to the flywheel.
- Includes safety strap to hold the clutch securely when maneuvering or working.
 - For use with 10 and 14-splined adapters, not included. Fits OTC and other high-lift and low-lift transmission jacks



600005
Splined Shaft Adapter for 5018A Clutch Handler

Optional splined shaft adapter for Eaton Fuller UltraShift Plus Transmission, 14 Spline, 2" OD, 1.18" Pilot. For use with the OTC 5018A Clutch Handler. Includes part number 600007 clutch handler shaft adapter allowing splined shafts designed for the 5015A to be used on the 5018A.



Shop-ready Solutions EV Chargers from Bosch

Reduced installation cost

- No need to cut or modify during installation
- Install with local certified electrician
- No specialized training required
- No payment system required
- No additional networking infrastructure costs during installation

Low total cost of ownership

- No app required
- No maintenance
- No monthly maintenance and/or Wi-fi fees
- Simple plug and play
- UL/cUL/ETL/cETL Safety Listed on full product not just components

Bosch Customer Service

800 321-4889
(Ext. 4, Option 2)

OTC and Robinair Customer Service

800 533-6127
(Option 1)

24030466_Muscle Tools_Q2 2024 edition, Printed in U.S.A.

Prepare your shop to work on EVs with our Bosch EV Service Checklist.



Visit boschevsolutions.com/ev-checklist

All Bosch EV chargers meet either UL/cUL or ETL/cETL safety standards on full units



EV3000 30kW DC Fast Charger

- Indoor & Outdoor Use
- Charge up to 4 times faster than Level 2 AC charging stations
- Requires a dedicated circuit
- 17 ft Cable
- 3-year warranty



EV810 Level 2 Charger

- Indoor & Outdoor Use
- Fixed Mount
- 18 Ft Cable
- 3-year warranty



EV410 Level 2 Charger

- Indoor & Outdoor Use
- Movable
- 25 ft Charge Cable
- Made in USA
- 4-year warranty



EV850 Level 2 Charger

- Indoor & Outdoor Use
- Single Bollard in Stainless enclosure
- 23 ft Cable
- 3-year warranty

EV860 Level 2 Charger

Same as EV850 with two Chargers