

MUSCLE TOOLS Q2 2023 EDITION

# HIGH TECH TO HARD TECH



**BOSCH**

**ROBINAIR**

**OTC**

*The most advanced diagnostics, tools & equipment*



Compare a Bosch ADS 525X, ADS 625X, or 3824A ESI[truck] to your current scan tool for 30 days.

**30-DAY MONEY BACK GUARANTEE**

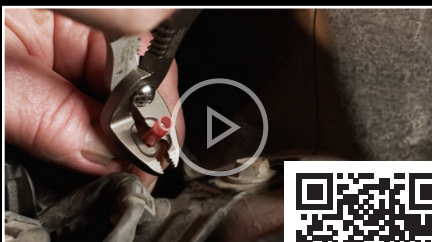
Purchase and register a Bosch ADS 525X, ADS 625X, or 3824A ESI[truck] diagnostic tool. If you are not satisfied with your new tool, return it to Bosch within 30 days of invoice date for a full refund. For more information about the 30-Day Money Back Guarantee, call 1-855-BOSCHTECH (1-855-267-2483).



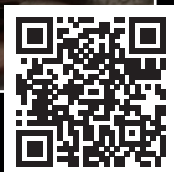
## NEW OTC TOOLS TO BEAT THE FLAT RATE



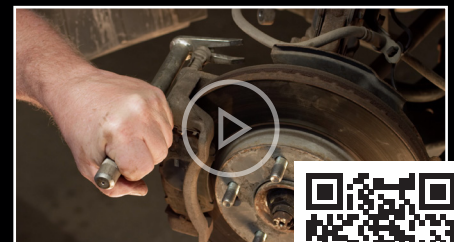
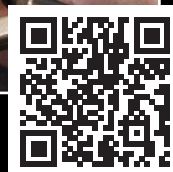
SCAN TO WATCH THE VIDEOS NOW!



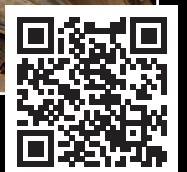
**5950A Angled Crimping Pliers**



**7503HD Heavy Duty Tie Rod/Ball Joint Remover**



**7302 Brake Caliper Pin/Bolt Remover Set**



Invented for life



# Committed to quality because your reputation depends on it.

A complete lineup of connected diagnostic solutions that work together seamlessly to solve complex, cross-functional problems at every stage of the repair process. Engineered to optimize troubleshooting, boost efficiency, and alleviate tedious tasks while empowering you to focus your expertise on delivering quality repairs with precision and confidence.

*Solutions for every job.*

[boschdiagnostics.com](https://boschdiagnostics.com)

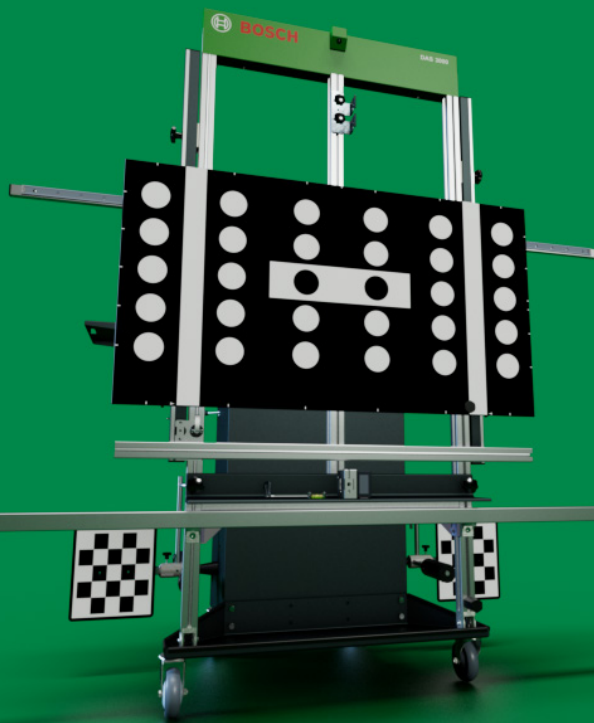
**BOSCH**

# A powerhouse lineup of repair solutions from the global leader in diagnostics



## Professional Diagnostics

The next generation of scan tools with the most advanced OE level vehicle coverage supporting scanning, live data access and complete bi-directional functions.



## ADAS Recalibration

A seamless, full-system solution that guides you from setup through calibration in half the time.



## Heavy Duty Diagnostics

Heavy duty solutions to help you get the repair done right and the vehicle back in operation.



## Test, Tune and Analyze

Test, analyze and diagnose your vehicle electrical and mechanical systems.

## Unbeatable coverage for HD trucks, construction equipment and more



Now with  
Extended  
License  
Subscription\*

### Now with ELS\* (Extended License Subscription)

- All diagnostic functions continue after subscription expiration\*\*
- New coverage provided with active subscription
- Troubleshooting and Repair Software sold separately

\* Effective on all contracts renewed or registered August 1, 2021 and thereafter

\*\* Applies to Truck (3824A and 3824-08) and OHW (3824CBL-UPG and 3824-080HW) Coverage

### 3824A ESI[truck] Heavy Duty Diagnostic Solution

Truck, engine, and system coverage

- **Truck brands:** Freightliner, International, Kenworth, Mack, Volvo, Peterbilt, Sterling, Western Star, and more
- **Engine brands:** PACCAR, Perkins, Detroit Diesel-MBE, Mack, Navistar, Caterpillar, Deutz, MTU, and more
- **System coverage:** Transmissions, brake systems, trailer ABS, exhaust treatment, and more

#### Expert-level diagnostics

- Automatic vehicle ID
- Fault code reading, reporting, clearing
- Diesel particulate filter (DPF) regeneration
- Cylinder cut-out
- Injector coding and trim files
- Key component actuations
- Special tests
- Vehicle parameter modifications
- Includes 30-day free Troubleshooting & Repair Trial

### 3824A-TBL Heavy Duty Tablet Upgrade

- Everything you need to upgrade an existing 3824 ESI[truck] Tablet to the new and improved 3824A model
- Windows 10 Touchscreen tablet



### 3824-08R Troubleshooting & Repair Subscription

- Faster, more efficient heavy duty vehicle repairs
- 13,000+ procedures guide user through each step to troubleshoot vehicle issues
- Procedures by DTCs or by vehicle symptoms
- Technical Service Bulletins (TSBs) included

### 3824CBL-UPG ESI[truck] Off-Highway Upgrade Cable Kit with Introductory Software License

Add off-highway vehicle and machinery coverage for multiple manufacturers to your 3824 or 3824A ESI[truck] scan tool.

- **Coverage included for:** Construction equipment, agricultural vehicles, stationary engines, street sweepers and more
- **Manufacturer coverage:** Caterpillar, John Deere, Kubota, Perkins, Volvo, Massey Ferguson, SISU, Deutz, Deutz-Fahr, MTU, and more
- **System coverage:** Gearbox, HVAC, engine, steering, hydraulic systems, suspension, electronic modules, antipollution, central computer and more
- **Diagnostic coverage:** Manual processes, diagnosis info, measurable values, component actuations, ECU data, parameter IDs (PIDs), calibrations and resets, system technical data, wiring diagrams, vehicle technical data and vehicle maintenance info

#### Kit contents:

- 10 cables for machinery, construction equipment, agricultural vehicles and more
- ESI[truck] off-highway software package with full diagnostic capabilities. Introductory off-highway software expires when your ESI[truck] heavy duty truck software expires
- Software renewals can be done simultaneously, ensuring continuous HD truck and off-highway vehicle coverage

### 3824BSC ESI[truck] Software and Adapter Kit

- Includes the ESI[truck] platform features, adapters, software, and coverage for use on your own Windows 10 device
- ESI[truck] diagnostic software with the functions and aftermarket coverage techs need, RP1210 Data link adapter, 6 and 9 pin cables, and HD/OBD II cables

### 3824-08 ESI[truck] 1-Year Renewal License

- 1-Year (12-month) renewal license for existing ESI[truck] user

### 3824-080HW ESI[truck] Off-Highway 1-Year Software License

- 12-months of off-highway diagnostic coverage, including all coverage updates
- Used to renew initial software included with Off-highway upgrade cable kit with introductory software license

For more information on software updates and off-highway coverage upgrades, visit [boschdiagnostics.com](http://boschdiagnostics.com)

Off-highway cable upgrade kit and off-highway software only compatible with 3824A, 3824 and 3824BSC ESI[truck] diagnostic tools. Customer must first purchase Off-highway upgrade cable kit with introductory software (3824CBL-UPG) prior to purchasing or activating Off-highway 1-year software license (3824-080HW)



23 specialty  
cables recently  
released  
(35+ available) for  
exclusive coverage on  
OHW vehicles



## 3920 VET 100 Circuit Analysis Tool

Quickly identify electrical issues in failed circuits



3920

### Bosch VET 100 Circuit Analysis Tool

- Perfect tool for Data stream analysis using your scan tool
- Identify failed circuit component, wiring or PCM
- Simulates the sensor you are diagnosing by inputting a determined voltage at the sensor location
- Allows input voltage from .5VDC - 7VDC in .5VDC increments
- Use your scan tool to verify if correct voltage is being applied to circuit
- Bypass sensor to send desired voltage back to PCM
- Works with 12V and 24V systems with vehicle voltage displayed. Also includes a "flashing" low battery voltage indicator



BAT155

### BAT155

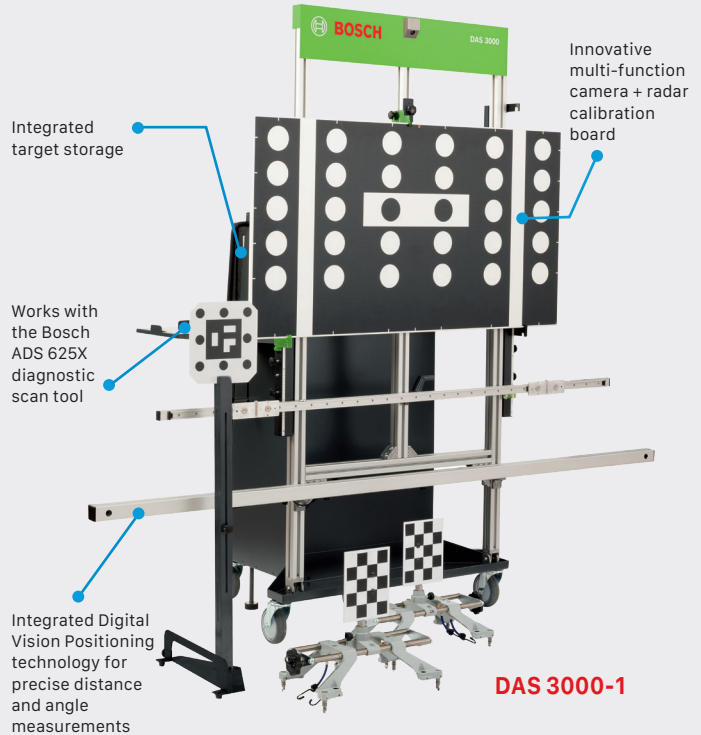
#### Heavy Duty Battery and Electrical System Analyzer

- 100 - 6,000 Cold Cranking Amp (CCA) Test Capacity
- Enables Testing Battery Packs (Multiple Batteries connected together) in the vehicle
- Infrared Temp Sensor for measuring battery temp (increases accuracy of CCA measurement)
- Optional Amp Probe and Voltmeter
- Tests 6V, 12V batteries and 12V, 24V charging systems

## DAS 3000-1

### ADAS Recalibration System

A complete ADAS recalibration package that enables shops to quickly, easily and precisely recalibrate Automated Driver Assist System



DAS 3000-1

## TPA 300

Grow your aftermarket solution with complete TPMS sensor coverage



3934

### Pair with any Bosch diagnostic tool to program new sensor IDs via OBD

- Activate and read TPMS sensor data, program sensors, check remote keyless entry signal and display sensor data in seconds
- Perform OBD II relearns within minutes when paired with a compatible Bosch manufactured diagnostic scan tool
- Full database of indirect, manual and auto relearn procedures
- Intuitive, full-color display with easy vehicle lookup by make, model and year
- Supports all known OE and aftermarket programmable sensors for all light vehicles
- New features, vehicles and sensor coverage added regularly
- Includes 3 years of free software updates

Compatible with any Bosch manufactured diagnostic tool



SMT 300

## SMT 300

### LeakTamer II EVAP & Diagnostic Smoke Machine

Multi-purpose tester designed not only for EVAP testing but for leak detection in any low pressure closed system including oil leaks, exhaust leaks, wind leaks, water leaks, EGR leaks and many more

- Fully featured machine with graduated smoke flow control valve, air flow meter, and pressure/vacuum decay gauge
- Full complement of accessories and storage case included



SMT 500

## SMT 500

### Portable Leak Detector

- On Board Air compressor eliminates need for shop air or inert gas tank during use
- Variable flow control detect leaks as small as 0.01" in sealed systems
- Pressure decay testing
- Compact, lightweight design (ultra-portable at 11 lbs)

# Complete YF service



AC1234-4

AC1234-9  
Connected

## What do I need to service R-1234yf systems?

- › A new machine meeting SAE J2843 standard; Robinair's AC1234-4 or AC1234-9
- › A new leak detector meeting SAE J2913 standard; Robinair's LD3, LD5 or LD7
- › A syringe-type oil injector to inject oil back into the system; Robinair's 18465
- › Optional tracer gas leak detector to reduce cost searching for leak; Robinair's LD9-TG

### A New Leak Detector

Your existing leak detector may not recognize R-1234yf, meaning you may not catch an expensive refrigerant leak. Invest in one that meets SAE J2913 and J2791 standards.

- › LD3 leak detector automatic calibration and audible alerts
- › LD5 leak detector with bar graph mode and color display
- › LD7 premium leak detector with bar and pinpoint graphing modes and detects both R134a and R1234yf.



LD7 shown

### New Syringe-Type Oil Injectors

1234yf systems have different fittings and couplers, requiring a new syringe-type oil injector to put oil back into the system. Current SAE standards for 1234yf service does not allow automatic oil injection on a machine.

- › 18465 PAG-labeled 1234yf injector for low-voltage systems in gas and diesel vehicles
- › 18470 POE-labeled 1234yf injector for electric and hybrid vehicles



18465 shown

**80211TMP****Bluetooth temp probes master kit**

- Read and track temperatures from multiple locations from your A/C machine
- Use up to 2 probes per compatible Robinair machine
- Enables WiFi and Bluetooth capabilities on NI and AC1234-4 machines

**80211VCI****VCI master kit + database**

- Enables WiFi and Bluetooth capabilities on NI and AC1234-4 machines
- Wirelessly gather and transmit vehicle year, make and model info to your compatible Robinair machine
- Includes current-year refrigerant capacity database to quickly determine correct refrigerant charge, oil type and oil capacity
- Also reads generic OBDII codes to help troubleshoot A/C system issues

**What wireless accessories fit my machine?**

Non-wireless A/C Machine			Wireless Enabled A/C Machine	
A/C Machine	VCI	Temp Probes	VCI	Temp Probes
34288NI, 34788NI, 34788NI-H, 34988NI	80211VCI	80211TMP	ACS-250*	80213 or 80212*
34998, AC1234-9	—	—	ACS-250**	80213 or 80212
AC1234-4	80211VCI	80211TMP	ACS-250*	80213 or 80212*

\*Use of ACS-250, 80212 or 80213 on NI or AC1234-4 requires machine first be WiFi/Bluetooth enabled using either 80211TMP or 80211VCI master kit

\*\*Database purchase required for vehicle refrigerant capacity

**Find leaks and diagnose system issues faster**

Connected accessories, leak detectors, refrigerant analyzers and tracer gas detectors for R-134a and R-1234yf service

**16995****R-ID Plus refrigerant identifier/analyzer**

- Analyze R-134a and R-1234yf refrigerant for purity and contamination
- Prevent contaminated refrigerant from being pulled into your machine
- Includes printer to add refrigerant purity to service report
- R-134a and R-1234yf tank adapter; R-134a and R-1234yf hoses included
- Available as 16990 R-ID without printer

**EVDC100****A/C Electronic Variable Displacement Compressor Tester**

- Eliminates misdiagnosing electronic variable displacement A/C compressors
- Quickly diagnosis and verify valve function, lowering total repair time and costs
- Adjustable tester output
- Includes connect adapters for both old and newer style compressors
- Heavy duty battery clips and cable provides power from vehicle battery, eliminating the need for batteries
- Made in the USA

**LD7****Premium refrigerant leak detector**

- Detects R-1234yf and R-134a leaks for use on most vehicles
- Sweep, bar graph and line graph modes make finding leaks faster, easier
- Features audible detection alert, UV LED lights for use with UV dye and inspection light
- Sensor life up to 10 years for reliable leak detection
- Available as LD3 and LD5 versions

**LD9-TGKIT****Tracer gas leak detector service kit**

- Use inexpensive Tracer gas instead of costly refrigerant to find leaks
- Tracer gas is a 95% nitrogen, 5% hydrogen mixture and harmless to A/C systems
- The LD9-TG detector sniffs out hydrogen, detecting leaks faster and at less cost
- Kit includes 1234yf coupler, 134a coupler, Tracer gas detector, hose and Tracer gas regulator
- Available as LD9-TG, Tracer gas detector only

### Combining Simple Operation with Superior Accuracy

These machines will test, recover and recharge R-134a and R-1234yf automotive A/C system quickly and accurately.



Features	34288NI	34788NI	34788NI-H	34988NI	34998	AC1234-4	AC1234-9
Fully Automatic Function: Program to recover, vacuum, leak test and charge without operating panel valves.	Manual Valves	✓	✓	✓	✓	✓	✓
Automatic fluid drain/inject	Oil drain	Oil drain/inject*	Oil drain	Oil drain/inject, dye inject**	Oil drain/inject, dye inject**	Oil drain	Oil drain
A/C System Flush: Flushes a vehicle's A/C system with refrigerant, eliminating any residual oil or other liquid. (Flushing adapters not included)	—	—	✓	✓	✓	✓	✓
Save & print before and after service data: Allows the user to store before and after service information by vehicle and print this information to provide to a customer.	—	✓	✓	✓	✓	✓	✓
Visual & Audible Alarm: Notifies the user when service is complete, or if a problem has occurred.	—	✓	✓	✓	✓	✓	✓
Vacuum Leak Test: Monitors level after evacuation, informs of possible leak.	—	✓	✓	✓	✓	✓	✓
Automatic Air Purge: Eliminates system-damaging air without monitoring gauges or opening valves.	✓	✓	✓	✓	✓	✓	✓
Automatic Refrigerant Refill: Maintains a user-selectable amount of refrigerant in an internal vessel and signals when it's time to change supply tank.	—	✓	✓	✓	✓	✓	✓
Vacuum Feature: Defaults to 15 mins, programmable up to 99 mins. "Remaining time" is displayed.	✓	✓	✓	✓	✓	✓	✓
Multilingual display	4.3" color LCD	4.3" color LCD	4.3" color LCD	7" color LCD	10.5" hi-res touch screen	4.3" color LCD	10.5" hi-res touch screen
Refrigerant Charging:	Low only	High, low or both	High, low or both	High, low or both	High, low or both	High, low or both	High, low or both
Refrigerant Management System: Displays refrigerant use and monitors remaining filter life. Prompts appear when 1/3 of filter life remains.	✓	✓	✓	✓	✓	✓	✓
Electric Vehicle: Capable of servicing high voltage electric compressor A/C systems.	—	—	✓	—	—	✓	✓
Printer	30038	30038	30038	Included	Mopria Print Service wireless printing	30038	Mopria Print Service wireless printing
Bluetooth temp probes: Dual-zone temp recording and reporting	80211TMP	80211TMP	80211TMP	80211TMP	80212 or 80213	80211TMP	80212 or 80213
Bluetooth VCI: Reads YMME and refrigerant capacity	80211VCI	80211VCI	80211VCI	80211VCI	ACS-250***	80211VCI	ACS-250***

\* One oil bottle. \*\* Two oil bottles and one UV dye bottle. \*\*\*ACS-250 requires purchase of 34001 or 34002 database to read YMME and display refrigerant capacity

All machines use 34724 filter and 13172 maintenance kit

### Syringe-type Injectors

#### Oil injectors for YF, EV and hybrid vehicles

Use these syringe-type injectors to add oil to a fully pressurized A/C system. Fill the barrel with the amount of oil needed, connect the injector, and press the plunger. Not recommended for UV dye injection.



#### R-134a Oil Injectors

**18480** PAG labeled for gasoline and diesel vehicles

**18490** POE labeled for hybrid and electric vehicles

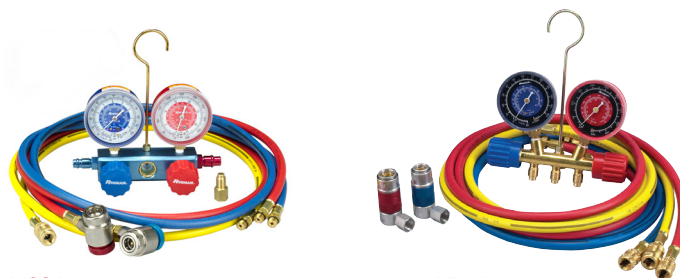
#### R1234yf Oil Injectors

**18470** POE-labeled 1234yf injector for electric and hybrid vehicles

**18460** Unlabeled 1234yf oil injector

**18465** PAG-labeled 1234yf injector for low-voltage systems in gas and diesel vehicles

### Manifolds and Hose Set



#### 41234

#### R1234yf Aluminum Manifolds and Hose Set

- Easy-to-read 3-1/8" adjustable gauges
- Durable aluminum manifold block with fittings

#### 45111

#### 2-Way Brass Manifold R134a Manifold Hose Kit

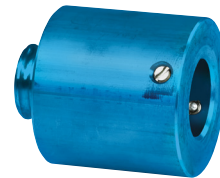
- 90° manual couplers
- 72" R134a hose set

# NEW CONNECTED ADAPTER EXPANSION KITS



## CA6636-HCB HONDA CONTROL ARM BUSHING KIT

- Easier Honda and Acura control arm bushing removal & installation
- Unique adapter shapes and sizes fit most Honda and Acura vehicles from 2001 – 2015
- For use with CA7149 connected adapter starter kit, CA6630 connected adapter professional kit, or CA6636 connected adapter C-frame
- Control arm bushings found on Honda Accord, Civic, Element and CRV; Acura TSX, CSX, I\*LX and RSX



## CA6636-EXT CONNECTED ADAPTER EXTENSION

- Adds clearance and spacing for ball joint studs on the drive screw side
- Allows the C-frame to be oriented in either direction and in tight spaces
- For use with CA7149 connected adapter starter kit, CA6630 connected adapter professional kit, or CA6636 connected adapter C-frame



## CA7149 CONNECTED ADAPTER STARTER KIT

- 7 connected cups & adapters hold securely to C-frame and drive screw
- 235+ vehicle models covered, from Honda Accord to Ford F-350s
- Backwards compatible with all OTC ball joint kits and adapters



## CA6630 CONNECTED ADAPTER PROFESSIONAL KIT

- 25 connected cups & adapters hold securely to C-frame, making R&I easier
- 600+ vehicle models covered, including compact cars up to HD trucks
- Fully illustrated manual with adapter callouts, diagrams and instructions by vehicle model
- Backwards compatible with all OTC ball joint kits and adapters

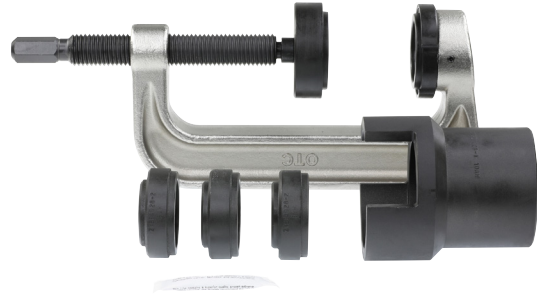
## New Navistar tools and Diesel Engine Adapters



**5865**

### EGR Valve Puller

- Aids in removal of EGR valve on select Navistar engines
- Works on 2010 MaxxForce 9, 10 & DT engines; 2013 N9 and N10 engines with SCR
- Similar to Navistar OE tool ZTSE4941



**5867**

### Cab Mount Bushing Kit

- Easier removal and installation of cab-mounting bushings on select Navistar bodies
- Extra-large C-frame provides clearance and necessary force to R&E cab-mounting bushings
- Works on the following bodies: 9000i Series, DuraStar, HV, HX, LoneStar, LT, MV, PayStar, ProStar, RH, TerraStar, TranStar, WorkStar
- Similar to Navistar OE tool ZTSE4928

## Heavy Duty Engine Stand and Engine Plates



**1750A**

### 6000 LB. Revolver Diesel Engine Stand

- 96 to 1 ratio worm and gear set rotates components a full 360°; handle locks in any position.
- Includes 205061 universal mounting plate for use with individual engine adapter plates.

**1750**

### Engine stand without universal engine adapter assembly

**NEW**



1750-47389  
Detroit Diesel

**NEW**



1750-47366  
Mack / Volvo



1750-47022  
Detroit Diesel



1750-4940  
Navistar / IH



1750-4649  
Navistar / IH



1750-4789  
Navistar

### Navistar and Detroit Diesel adapters

Item	Description	Application	Brand	Component	Requires use of 205061 plate
<b>1750-47389</b>	Detroit Diesel engine adapter plate	DD13 & DD15 engines	Detroit Diesel	Engine	No
<b>1750-47366</b>	Mack / Volvo engine adapter plate	MP7 / D11 engines	Mack / Volvo	Engine	No
<b>1750-4940</b>	Navistar / IH MaxxForce engine adapter plate	2010 - 2016 Navistar MaxxForce DT, MaxxForce 9, MaxxForce 10 engines	Navistar / International Harvester	Engine	Yes
<b>1750-4649</b>	Navistar / IH MaxxForce engine adapter plate	2004 - 2009 International Harvester DT466, DT570, HT570; Navistar MaxxForce DT, MaxxForce 9, MaxxForce 10 engines	Navistar / International Harvester	Engine	Yes
<b>1750-4789</b>	Navistar MaxxForce engine adapter plate	2007 - later MaxxForce 11, MaxxForce 13 engines	Navistar	Engine	Yes
<b>1750-47022</b>	Detroit Diesel MBE 900 engine adapter plate	Detroit Diesel 2004 - 2007 MBE 900 engines	Detroit Diesel	Engine	No

## Safely lifting and holding Class I, II and III vehicles up to 4 tons



LDJA2-SET

### LDJA2 2-ton aluminum racing jack

- Lift compact sedans to small crossovers
- Light, sturdy aircraft aluminum with carry handles is ideal for service trucks and portability

### SA02 2-ton aluminum jack stands

- Pin-style jack stand for fast, secure vehicle holding
- Aircraft aluminum construction for rust-free performance

### LDJA2-SET

- Includes LDJA2 2-ton aluminum jack and SA02 2-ton aluminum stands



LDJ2

### LDJ2 2-ton low profile service jack

- Long reach low-profile jack for low ground clearance vehicles

### LDJ35 3.5-ton steel service jack

- Safely handles large SUVs and crossovers to 3/4-ton pick-ups
- Rolled edges add strength to resist twisting for larger loads



S03

S04

### S03 3-ton steel jack stands

### S04 4-ton steel jack stands

- Ratcheting design cannot be released under load
- Formed and welded steel base with baked enamel finish for strength, corrosion resistance
- S03 and S04 sold as a pair

## Service Jacks



	LDJA2	LDJ2	LDJ35
Capacity	2-ton	2-ton	3.5-ton
Lifting range	3-1/4" (saddle removed) - 18-5/8"	3"	5.2" to 21.9"
Padded handle length	47.6"	50"	50" spring-loaded padded lower handle
Footprint	11.875" x 25.125"	14.29" x 32.67"	14.5" x 28.5"
Reach	72.75"	69"	78.5"
Saddle	4-1/2" dia., round	4" dia. round, rubberized	6" dia., flat steel, rubberized, pinned to lifting arm
Casters	4; 2.5" front fixed (2), 1.75" rear swivel (2)	4; 2.75" front fixed (2), 2.75" rear swivel (2)	4; 3.15" front fixed (2), 2.5" rear swivel (2)
Frame height	6"	2.75"	6.25"
Jack pack	LDJA2-SET, includes SA02 jack stands, pair	N/A	N/A

## Jack Stands



	SA02 (sold as a pair)	S03 (sold as a pair)	S04 (sold as a pair)
Capacity	2-ton	3-ton	4-ton
Max height	15.44"	17-11/16"	23-13/16"
Min height	9-1/2"	12"	15-1/2"
Footprint	7" round base	8-1/4" x 7-1/2" square base; welded foot pads	Square base; welded foot pads
Adjustment	Pin lock; 6 slots	Ratcheting; 11 teeth	Ratcheting; 11 teeth
Saddle	Flat-top style, 2.17" x 2"	V-notch style, 1" x 3.5"	V-notch style, 1.3" x 4.3"

### Covering the big classes for lifting it all



HDJ5

#### HDJ5 5-ton hydraulic service jack

- Designed to safely lift step vans and bucket trucks
- 3-position handle lays flat, 45° or 90° for storage and use

#### HDJ5P 5-ton hydraulic service jack with air-assist

- Same as HDJ5, with air/hydraulic assist to reduce effort to raise, lower vehicles



HDJ10

#### HDJ10 10-ton hydraulic service jack

- Ideal for bucket trucks and school buses
- Rugged steel frame and extra-large wheels for durability and strength

#### HDJ10P 10-ton hydraulic service jack with air-assist

Same as HDJ10, with air/hydraulic assist to reduce effort to raise, lower vehicles



HDJ20

#### HDJ20 20-ton hydraulic service jack

- 3-position spring-loaded handle can lay flat, 45° or 90°
- Foot and hand pump options to raise load quickly

### 5, 10, and 20-ton heavy-duty jacks



5, 10, 20-ton heavy-duty jacks	HDJ5	HDJ5P	HDJ10	HDJ10P	HDJ20
Capacity	5-ton	5-ton air-assist	10-ton	10-ton air-assist	20-ton
Lifting range	6" to 22"	5-7/8" to 22"	6.3" to 22"	6-3/8" to 22"	7-1/2" to 23.8"
Air pressure	—	80–120 PSI	—	80–120 PSI	—
Handle length	43" 3-position with lock and release controls	45.4" 3-position with lock and release controls	43-1/4" 3-position with lock and release controls	45.4" 3-position with lock and release controls	47-1/2", 3-position spring-assisted locking
Footprint	15" x 56"	14.2" x 55.5"	18" x 60"	18.9" x 60.8"	18-1/8" x 61-3/8"
Reach	47"	87"	51"	90"	110.4"
Saddle	5-1/8" dia., round	5.1" dia., round	6" dia., round	5-3/4" dia., round	6-1/2" dia., steel crown
Casters	4; 4.4" fixed front (2), 2.8" mid-body swivel (2)	4; 4.4" fixed front (2), 2.8" mid-body swivel (2)	4; 5.6" fixed front (2), 3.6" mid-body swivel (2)	4; 5.6" fixed front (2), 3.6" mid-body swivel (2)	6; 4 front fixed; 2 mid-body swivel
Frame height	7.9"	7.5"	9.8"	9.8"	10.2"



### S06 6-ton steel jack stands

- Ratcheting design cannot be released under load
- Formed and welded steel base with baked enamel finish for strength, corrosion resistance



### S020 20-ton steel jack stand

- Large 15-1/2" square base safely holds up to 40,000 lbs
- Dual pin-style stand with four adjustment positions



### S022 22-ton steel jack stands

- 11" flat square base prevents sinking into concrete or other surfaces
- Large flat base rated to safely hold up to 44,000 lbs
- Pin Style Stand with 3 adjustment positions

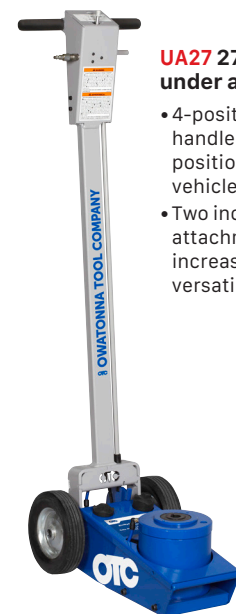
Heavy-duty stands	S06 (sold as a pair)	S020 (single)	S022 (sold as a pair)
Capacity	6-ton	20-ton	22-ton
Max height	23-11/16"	24"	19-7/8"
Min height	15-5/8"	15-1/4"	13-7/8"
Footprint	11-9/16" x 10-3/8" square base; welded foot pads	15-1/2" square base	11" square base, flat for maximum ground contact
Adjustment	Ratcheting; 11 teeth	Dual-pin; 4 slots	Pin-style; 3 slots in 3" increments
Saddle	V-notch style, 1.2" x 4.2"	6" dia., round steel	3" x 3-3/4" V-notch

Under-axle service jack	UA22	UA27
Capacity	22-ton	27.5-ton
Air pressure	90 - 145 PSI	90 - 175 PSI
Max height	20-2/3" with longest saddle	21-3/8" using longest saddle
Min height	8.27"	8-1/4"
Handle length	47.24" T handle with lowering lever and air-chuck hook	48-3/4" T handle with lowering lever and air-chuck hook
Footprint	22.63" x 11.73"	22" x 12"
Reach	69.87"	69.87"
Saddle	3" dia., round with center notch, includes 3 lengths	3" dia., round with center notch. Includes 2 saddle adapters
Frame height	8.27"	8.27"
Wheels	2 fixed; 7.88" rubberized steel	2 fixed; 7.88" rubberized steel



### UA22 22-ton under-axle hydraulic service jack

- Includes 3 saddle attachments for height adjustment; 3/4" saddle; 1-15/16" saddle; 3-7/8" saddle
- Self-retracting ram activated with handle-end controls



### UA27 27.5-ton under axle jack

- 4-position, 48" handle allows easy positioning under vehicles
- Two included saddle attachments increase lifting versatility



**NEW**

### 5950D Angled Wire Stripping Tool

- Unique design puts stripping dies on the angled tip
- Patented design makes for easier use in hard to reach places
- Works on 12 to 20 AWG wire

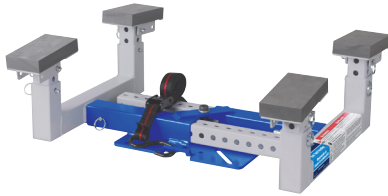


### 5019A 2,200 Lb. Capacity Low-Lift Transmission Jack

The 8-1/4" low height is perfect for aerodynamic trucks with low ground clearance. Special mounting adapter (No. 540231) fits popular Eaton® Fuller® RoadRanger® transmissions used on nearly all Class 7 and 8 heavy-duty trucks. Mounting plate angle is adjusted with the turn of a wrench. Degree of tilt: 20° back, 15° forward, 12° side to side. Swiveling pump handle permits ease of operation in restricted working spaces. Fast-acting pump quickly raises lifting arm.

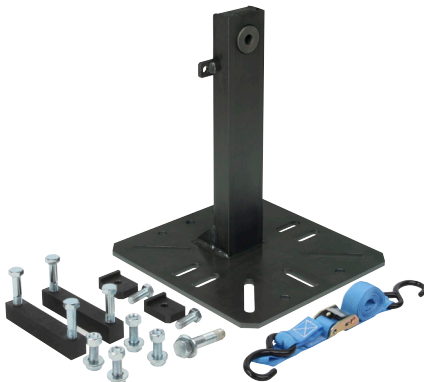
### 1758 Fuel tank handler

- Universal adapter plate and adjustability holds tanks up to 40 gallons
- Unique gearing holds load evenly to balance load over jack Heavy-duty foam-covered risers protect tanks and are individually adjustable
- Fits most transmission jacks



### 1797 Heavy-duty clutch adapter

- Adapter allows high or low-lift transmission jacks to handle heavy-duty clutch assemblies
- Expands use of your transmission jack; accepts optional splined shaft adapters — 545765, 48596, 48625, 440533 and 600011.
- Includes safety strap to securely hold clutch when moving or working



**NEW**

### TJH10 1,000-lb Capacity High-Lift Transmission Jack

- Tilting head for easier R&L and positioning of transmissions and other components
- Hydraulic system uses flash-chromed rams to prevent rust, for long shop life
- Limited lifetime warranty
- Meets all the newest ASME PASE safety standards

### 1580 1,500 lb. Capacity Easy Roller™

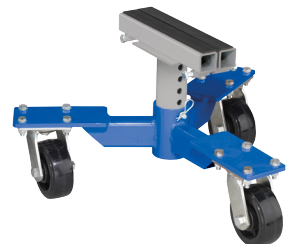
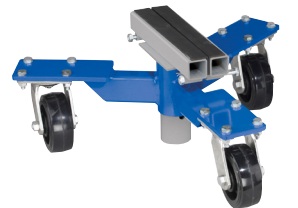
- Provides simple and efficient method of moving a disabled vehicle around a shop environment.
- Fits tread widths up to 12".
- 4 heavy-duty phenolic casters.
- 1,500 lbs. capacity per unit.
- Hydraulic lift mechanism with locking pin.



1580 (sold individually)

### 1572 Car Dolly (3,600 lbs., capacity pair)

- Innovative patent-pending design — clamps directly to pinch welds to prevent slippage during use.
- Independent units eliminate the need to adjust dolly width for different vehicle designs.
- Each unit has an independently adjustable threaded lift saddle with rubber pads to protect the vehicle frame.
- Universal design for use on all vehicle types without additional adapters.
- Provides easy movement of FWD vehicle after removal of drive train.
- The material on the 5" casters is polypropylene.
- Each unit has 1,800 lbs. capacity (3,600 lbs., pair) with low height of 9" and high of 14".
- May be used with or without tires on vehicle.





## Ford Axle Shaft Seal Installers

Correctly installs the seal onto the axle shaft and into the wheel knuckle, preventing front hub vacuum leaks that would cause the 4WD to not engage.

### 6695

Ford Axle Shaft Seal Installer. Works on 1998-2004 Ford F-250, F-350, F-450, and F-550 4X4s having the vacuum-operated front axle.

### 6697

Ford Axle Shaft Seal Installer. Works on 2005-newer Ford F-250, F-350, 4X4s having the vacuum-operated front axle.

### 6698

Ford Axle Shaft Seal Installer. Works on 2005-newer Ford F-450, F-550, 4X4s having the vacuum-operated front axle.



## 6575 Hub Grappler™ Kit

- Jaws designed and sized to properly fit hub applications and is quickly located on the puller bar without the use of fasteners.
- 3/4" custom drive screw coupled with the special equalizer washer provides smooth operation while proprietary heat treating extends its life 5-10 longer than similar designs.
- Six adapters increase application coverage. Includes tie rod/ball joint tool and two Ford axle installers.
- Included Application Guide is the most comprehensive on the market.



## 6575H Hydraulic Hub Grappler™ Kit

- An economical way to increase the performance and speed of wheel bearing and hub service.
- Kit includes a through hole 9-ton ram, OTC 2510A air/hydraulic pump, 6 ft. hose with couplers, drive screw and nut.
- Jaws designed and sized to properly fit hub applications and is quickly located on the puller bar without the use of fasteners.
- 3/4" custom drive screw coupled with the special equalizer washer provides smooth operation while proprietary heat treating extends its life 5-10 longer than similar designs.
- Six adapters increase application coverage. Includes tie rod/ball joint tool and two Ford axle installers.
- Included Application Guide is the most comprehensive on the market.

### 4406

## Adjustable Bearing Race and Seal Driver

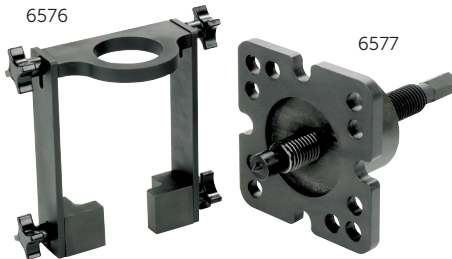
- Universal and fully adjustable.
- Twist head to adjustable from 3/4" to 3.5" (19mm to 89mm).
- Lock bolt holds jaws to preferred diameter.
- Steel striking cap mounted on aluminum handle and head provides a weight under 2 lbs.



### 7832

## GM Torsion Bar Unloader

- Larger design to also cover the newer GM truck applications.
- Application; 2011 & newer HD C/K trucks, 2010 and older GM K3500 series trucks with heavy-duty chassis and a larger torsion bar. 1988 to 2003 GMC and Chevrolet 1/2-, 3/4-, and 1-ton pickups; the S-10 Blazer and S-15 Jimmy, 4WD pickups with 4.3L V-6 engines; and 1991 to 2001 Oldsmobile Bravada.



6576S includes both 6576 & 6577

### 6576S

## Dodge Hub Service Set

- Removes stubborn hubs, using 2 methods.
- First, the 6576 Hub Pressing Tool is used to press off the hub with the aid of the power steering. The tool locates spacers between the U-joint yoke and axle housing. Unique design makes this a one person operation to remove the hub with the bearing in tact.
- In the event the Hub Pressing Tool does not budge the hub, the 6577 Hub & Bearing Housing Puller is used. This may separate the bearing, but the unique dual pattern design fits both the wheel hub and bearing housing, capable of applying 20 tons of force.

**6576** – Hub Pressing Tool, Fits Dodge 3/4 & 1 Ton 4WD 1994-Present applications.

**6577** – Hub & Bearing Housing Puller, Fits Dodge 3/4 & 1 Ton 4WD 1994-Present applications. Also fits GM and Ford 4WD Truck hubs.

### 8342

## Hub Resurfacing Kit

- Fits your power drill to quickly sand rust off studs and mounting surfaces where it is important to have a clean and debris free surface.
- The tool features a 1/4" dia. shank and a stud clearance pilot hole that accepts up to 1/2" studs.
- Sanding pads attach with Half turn thread.
- Includes holder and five sanding discs.
- Run at speeds between 5,000 - 20,000 rpm or less for best results.



### 7045B

## Front Coil Spring Compressor

This compressor fits most late-model rear wheel drive domestic vehicles in which the coil springs are between the upper and lower control arms. The tool features four case-hardened, self-aligning plates to ensure correct load distribution under tension. Includes two 3-3/8" ID plates and two 4" ID plates. Will not work on Mercedes-Benz vehicles.

### 7816

## Ford Torsion Bar Adjustment Tool

Before servicing a torsion bar on 1995-2001 Ford Explorer and 1998-2001 Mercury Mountaineer vehicles, you must first contain the bar to avoid possible damage. This tool securely accomplishes that task, allowing you to make adjustments.



### 7826

## Ford Truck Torsion Bar Tool

This tool firmly holds the torsion bar on Ford light-duty trucks while you adjust or service the front suspension. Without it, a torsion bar could unwind and possibly cause damage. The tool fits 1997-2003 Ford F-150 4WD pickups, 1995-2001 Ford Explorer 4WD, 1998-2001 Mercury Mountaineer, and 1998-2001 Ford Ranger.



## Electric Vehicle Charging Solutions

### EV300 Level 2 Charging Station

- Easy to install and use
- Industry standard NEMA 14-50 plug Included
- NEMA 3R-rated enclosure for indoor or outdoor installation (outdoor installation requires in-use cover over receptacle)
- Compact design ideal for areas with limited space (indoor and outdoor)
- Includes tamper resistant mounting bracket
- Easy to manage 16' cable
- 240V, 32A capacity for faster vehicle charging
- Up to 6 times faster than a standard wall outlet
- SAE J1772 charging connector is compatible with all EVs in North America
- 3 year warranty



EV300

### EV400 Series Level 2 Charging Station

- 25' cable is the longest available for more versatility and installation locations
- NEMA 3R-rated enclosure for indoor or outdoor installation (Outdoor installation requires in-use cover over receptacle)
- SAE J1772 charging connector is compatible with all EVs in North America
- Movable, plug-in installation allows charging when you need it, leaving an open outlet when not charging
- Safely charges in all weather conditions - rain, snow, sleet, ice and extreme heat or cold
- Bracketless mounting for fast and easy installation
- Clear, bright LEDs indicate charging and power status, stop and reset functions
- Industry leading 4 year warranty



EV410

### EV810 Series Level 2 Charging Station

- NEMA4X-rated enclosure is weatherproof for safe charging in any weather or location
- SAE J1772 charging connector is compatible with all EVs in North America
- Flexible mounting. Hardwire from back, top, or side. Can be fitted with included NEMA plug
- Movable, plug-in installation option allows charging when you need it, leaving an open outlet when not charging
- 3 year warranty



EV810

### EV3000 DC Fast Charger

- Charge up to 4 times faster than Level 2 AC charging stations
- 30KW DC Charger ideal for fleets, public parking lots and dealerships
- Can charge new vehicles that operate at higher voltages
- SAE J1772 CCS cable included. Compatible with nearly all battery electric vehicles sold in NA
- Wall mountable
- High resolution LCD display
- IP55 rated enclosure for indoor or outdoor installation
- 3 year warranty



EV3000

### EV850 Series Single Bollard Charging Station

- Galvanized steel bollard for parking lot and commercial use - 1/4" thick galvanized steel bollard protects against car bumpers, shopping carts and vandalism, protecting your investment
- NEMA4X-rated enclosure is weatherproof for safely charging in any weather or location
- SAE J1772 charging connector is compatible with all EVs in North America
- Hardwire installation and protective bollard creates safe, tamper-proof setup
- Also available as EV860 Dual bollard charging station with two EV810 Series charging stations in a galvanized steel bollard



EV850

EV860

23030170\_Muscle Tools\_Q2 2023 edition, Printed in U.S.A.

**All Bosch EV chargers meet either UL/cUL or ETL/cETL safety standards on full units**